

BBLs	-	<i>Barrels</i>
BCPD	-	<i>Barrels of condensate per day</i>
BG	-	<i>British Gas Trinidad and Tobago Limited</i>
BHP	-	<i>BHP Billiton (Trinidad) Limited</i>
BOPD	-	<i>Barrels of oil per day</i>
BPCD	-	<i>Barrels per calendar day</i>
BPTT LLC	-	<i>BP Trinidad and Tobago LLC formerly AMOCO and ARCO</i>
CDL	-	<i>Cliffs Drilling Limited</i>
CDTO	-	<i>Cliff Drilling Trinidad Offshore</i>
CNC	-	<i>Caribbean Nitrogen Company</i>
EEPTL	-	<i>Exxon Exploration and Production Trinidad Limited</i>
EOG	-	<i>EOG Resources formerly ENRON Oil and Gas Ltd</i>
FO	-	<i>Farmouts</i>
LO	-	<i>Lease Operators</i>
LNG	-	<i>Liquefied Natural Gas</i>
LPG	-	<i>Liquefied Petroleum Gas</i>
MMBTU	-	<i>Millions of British Thermal Unit</i>
MMCF/D	-	<i>Millions of Cubic Feet per day</i>
MORAVEN	-	<i>Mora Oil Ventures Limited</i>
NGC	-	<i>National Gas Company</i>
PAP	-	<i>Pointe - a - Pierre</i>
PCS	-	<i>PCS Nitrogen Trinidad Ltd.</i>
PDVSA	-	<i>Petroleos de Venezuela Sud America</i>
PETROTRIN	-	<i>Petroleum Company of Trinidad and Tobago</i>
PETROTRIN-TRINMAR SBU	-	<i>Petrotrin-Trinmar Strategic Business Unit</i>
POMS	-	<i>Primera Oilfield Management Services</i>
PRIMERA	-	<i>Primera Oil and Gas Ltd (Formerly PCOL)</i>
TED	-	<i>Trinidad Exploration and Development Limited</i>
TERL	-	<i>Tracmac Energy Resources Ltd.</i>
TRINGEN	-	<i>Trinidad Nitrogen Company Ltd.</i>
TTMAR	-	<i>Trinidad and Tobago Marine Company Limited</i>
TTMC	-	<i>Trinidad and Tobago Methanol Company</i>
BGCB	-	<i>British Gas Central Block formerly Vermilion Oil and Gas Trinidad Limited</i>
VPTL	-	<i>Venture Production (Trinidad) Ltd</i>
WSPCL	-	<i>Well Services Petroleum Company Limited</i>

TABLE OF CONTENTS**1 CRUDE OIL PRODUCTION**

- 1.1 - TABLE 1A CRUDE OIL PRODUCTION
- 1.2 - GRAPH 1A TOTAL PRODUCTION

2 DRILLING AND COMPLETIONS

- 2.1 - TABLE 2A RIGS IN USE
- 2.2 - TABLE 2B RIG DAYS
- 2.3 - TABLE 2C DEPTH DRILLED
- 2.4 - GRAPH 2A DEPTH DRILLED
- 2.5 - TABLE 2D WELLS OF INTEREST
- 2.6 - TABLE 2E WELL COMPLETIONS

3 NATURAL GAS PRODUCTION AND UTILIZATION

- 3.1 - TABLE 3A - NATURAL GAS PRODUCTION BY COMPANY
- 3.2 - TABLE 3B - NATURAL GAS UTILIZATION BY SECTOR
- 3.3 - DOMESTIC GAS SALES

4 CRUDE OIL - IMPORTS, EXPORTS AND REFINING

- 4.1 - TABLE 4A IMPORTS
- 4.2 - TABLE 4B EXPORTS
- 4.3 - TABLE 4C REFINERY SALES
- 4.4 - GRAPH 4A EXPORTS - CRUDE AND REFINED PRODUCTS
- 4.5 - TABLE 4D REFINERY OUTPUT
- 4.6 - TABLE 4E REFINERY THROUGHPUT
- 4.7 - GRAPH 4B REFINERY THROUGHPUT

5 PETROCHEMICALS

- 5.1 - TABLE 5A AMMONIA PRODUCTION AND EXPORTS
- 5.2 - GRAPH 5A AMMONIA PRODUCTION
- 5.3 - TABLE 5B PHOENIX PARK GAS PROCESSORS LTD
- 5.4 - TABLE 5C UREA / METHANOL PRODUCTION AND EXPORTS
- 5.5 - TABLE 5D ATLANTIC LNG PLANT OPERATIONS
- 5.6 - TABLE 5E LNG/NGL PRODUCTION & SALES
- 5.7 - GRAPH 5D ATLANTIC LNG EXPORTS
- 5.8 - GRAPH 5E ATLANTIC LNG PRODUCTION

THIS REPORT WAS PREPARED USING PRELIMINARY DATA FOR
THE MONTH OF OCTOBER 2006

1.1

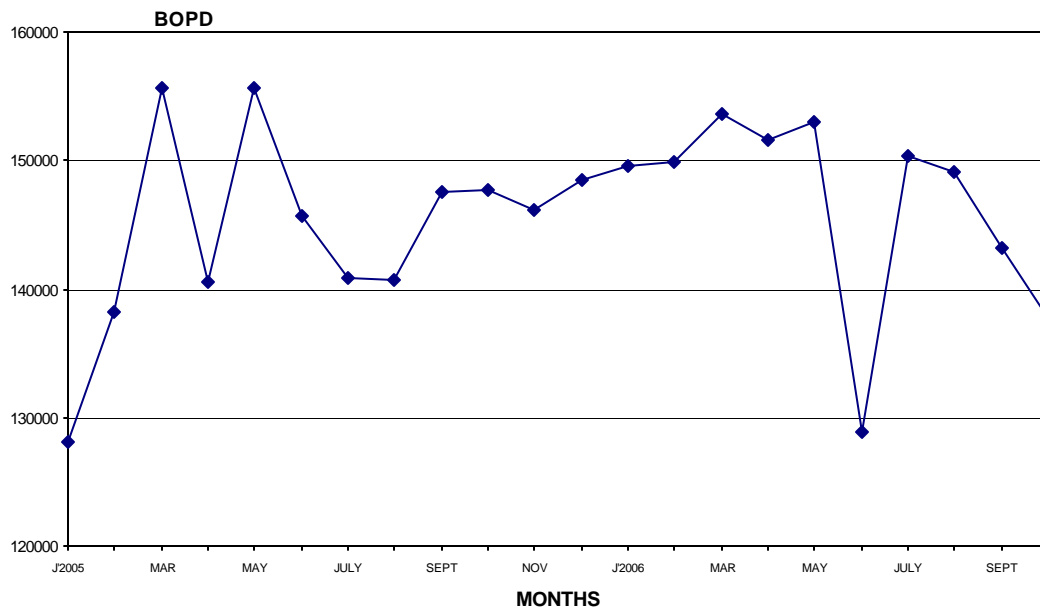
CRUDE OIL PRODUCTION

TABLE 1A - CRUDE OIL PRODUCTION (b.o.p.d)

COMPANY	THIS MONTH	LAST MONTH	% CHANGE
BG CENTRAL BLOCK T'DAD	202	415	(51.33)
BHP BILLITON	30,823	35,851	(14.02)
BP tt (LLC)	23,875	25,219	(5.33)
EOG RESOURCES	7,213	7,590	(4.97)
MORAVEN	294	117	151.28
PETROTRIN-TRINMAR	31,868	29,639	7.52
REPSOL YPF	18,561	18,361	1.09
TRINTOMAR	305	318	(4.09)
NEW HORIZON	73	108	(32.41)
NMERL	371	370	0.27
PETROTRIN	16,822	18,126	(7.19)
PETROTRIN (FO)	890	840	5.95
PETROTRIN (LO)	4,998	4,710	6.11
PRIMERA	511	500	2.20
TED	18	25	(28.00)
TEN ^o NORTH ENERGY LTD	875	998	(12.32)
TOTAL	137,699	143,187	(3.83)
LAND	22,963	24,018	(4.39)
MARINE	114,736	119,169	(3.72)

1.2

**GRAPH 1A - TOTAL PRODUCTION
JANUARY 2005 - OCTOBER 2006**



* PRODUCTION FOR LO/FO WAS SEPARATED IN MAY 2000

MONTHS	BP TT	TTMAR	EOG	BHP BILL	MORA VEN	T/MAR SBU	PETROTRIN	LO	FO	VPTL	NMERL	PRIMERA	REPSOL	BG CEN/BK	NEW HORIZON	TED	TOTAL
J2005	42005	654	5689	19059	262	33980	18769	4077	1074	795	728	443		487	91	16	107
	43175	589	5581	28887	288	32669	19378	4009	992	937	680	441		498	86	21	128129
MAR	39039	534	5942	50162	285	32694	19460	3974	956	957	635	419		499	116	11	155683
	35150	502	6311	41119	294	30319	19057	4002	941	1033	662	431		493	144	17	140475
MAY	37158	490	5687	50542	299	34171	19006	4259	994	1331	624	422		509	143	15	155650
	34787	434	6202	41851	301	34519	19147	4186	1062	1425	649	439		503	113	11	145629
JULY	32236	279	5188	41778	189	34558	19220	3949	995	912	636	391		459	97	18	140905
	33948	354	6002	40186	245	33537	18616	4356	1033	876	572	449		473	111	12	140770
SEPT	37418	356	7155	41515	314	34622	18539	4209	1038	819	550	403		516	131	22	147607
	34836	345	7645	45751	284	32702	18196	4339	1067	926	558	419		505	114	19	147706
NOV	32311	190	9131	44224	342	34504	18380	4197	906	801	526	407		193	88	16	146216
	14953	410	9622	44782	321	34896	18412	4174	927	965	352	382	18178	30	99	12	148515
J2006	17192	400	10190	44725	328	31984	18482	4410	910	910	294	417	19085	162	120	23	149632
	14905	364	9741	47618	306	32702	18010	4549	895	939	346	464	18443	512	110	21	149925
MAR	20640	277	9596	45560	297	32558	18133	4570	846	1013	334	427	18719	501	126	22	153619
	26095	371	9519	41045	306	33085	17911	4574	861	926	355	451	15479	489	117	27	151611
MAY	30452	371	8474	36082	232	33367	17398	4661	928	977	356	484	18612	460	98	17	152969
	28512	356	8510	14135	272	33457	17383	4554	920	991	367	425	18388	466	106	27	128869
JULY	29735	332	8268	34925	303	32807	17488	4995	924	944	386	413	18194	434	111	25	150284
	30839	320	8075	36394	245	31165	17420	4788	941	908	352	541	16568	479	109	23	149167
SEPT	25219	318	7590	35851	117	29639	18126	4710	840	998	370	500	18361	415	108	25	143187
	23875	305	7213	30823	294	31868	16822	4998	890	875	371	511	18561	202	73	18	137699

2.1

TABLE 2A - RIGS IN USE

COMPANY	NAMES OF RIGS IN USE
<u>MARINE</u>	
BHP BILLITON (T'DAD) LTD	NABORS 657
BPtt (LLC)	GSF MONITOR
PETROTRIN - TRINMAR	CDTOL RIG#110
BRITISH GAS T&T (NCMA)	GSF ALEUTIAN KEY
EOG RESOURCES T'DAD LTD	ROWAN GORILLA 111
<u>LAND</u>	
PETROTRIN	WSPCL RIG #2, WSPCL RIG #20
PETROTRIN (FO)	DISSL RIG #2
PETROTRIN (LO)	WSPCL RIG #4
BRITISH GAS (C/BLOCK)	NABORS 116
PRIMERA OIL & GAS LTD	TDN #5
TALISMAN (T'DAD) PET. LTD	TODCO #36
TOTAL	12

2.2

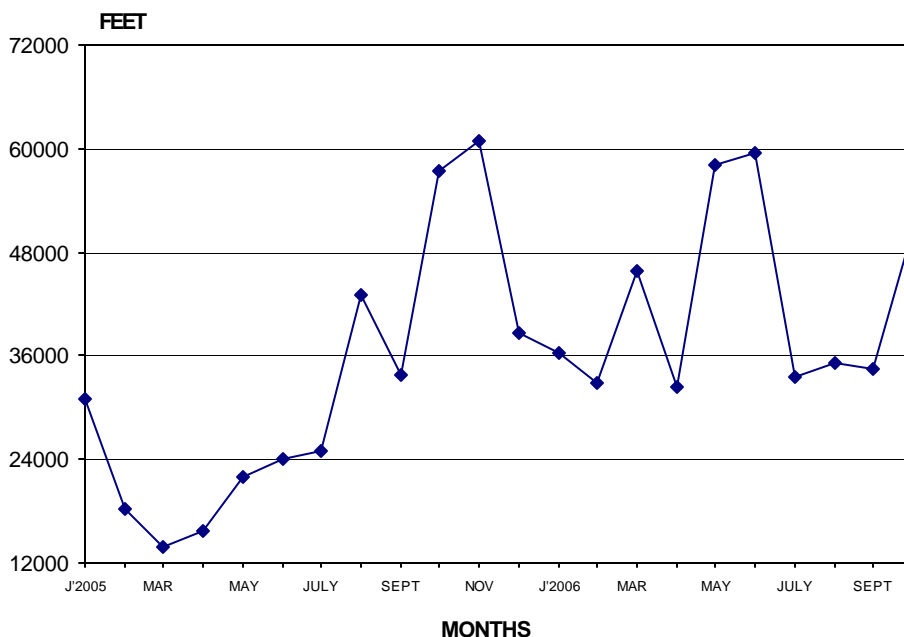
TABLE 2B - RIG DAYS

COMPANY	THIS MONTH	LAST MONTH
BHP BILLITON (T'DAD) LTD	26.00	30.00
BP tt (LLC)	31.00	31.40
EOG RESOURCES T'DAD LTD	19.00	0.00
BRITISH GAS T&T (NCMA)	27.00	30.00
PETROTRIN	56.00	48.00
PETROTRIN (FO)	2.00	18.00
PETROTRIN (LO)	20.00	21.00
PETROTRIN-TRINMAR	31.00	30.00
BRITISH GAS (C/BLOCK)	31.00	9.50
PRIMERA OIL & GAS LTD	27.00	0.00
TALISMAN (TRINIDAD) PETROLEUM LTD	31.00	30.00
TOTAL	301.00	247.90

2.3 **TABLE 2C - DEPTH DRILLED (FT)**

COMPANY	THIS MONTH	LAST MONTH
BHP BILLITON (T'DAD) LTD	372	6,765
TALISMAN (TDAD) PETROLEUM LTD	1,658	2,553
EOG RESOURCES T'DAD LTD	14,780	0
BP tt (LLC)	0	0
BRITISH GAS T&T (NCMA)	0	5,262
BRITISH GAS (C/BLOCK)	6,396	500
PETROTRIN	12,130	12,178
PETROTRIN (FO)	37	1,330
PETROTRIN (LO)	6,911	0
PRIMERA OIL & GAS LTD	3,764	0
PETROTRIN-TRINMAR	4,675	5,896
TOTAL	50,723	34,484

2.4 **GRAPH 2A - DEPTH DRILLED**
JANUARY 2005 - OCTOBER 2006



Government of Trinidad and Tobago

Ministry of Energy

MONTHS	TRINMAR	BPTT (LLC) advance	TED	PRIMER/A	EOG	PETROTRIN	PET (LO)	PET (FO)	NMERL	TALISMAN	CHEVRON		BHP		TOTAL
											BG (C/BLK)	TEXACO	BILLITON	BG (T/DAD)	
J2005	3855	2804	414		522	0	5517	2222	3097		5377	7102	0	30910	
	3910	7261	2613		0	0	0	2312	58		0	2146	0	18300	
MAR	2385	3785	3573		0	0	0	4074	0		0	0	0	13817	
	5799	1823	1400		0	4300	0	1490	0		0	805	0	15617	
MAY	4998	1668	0		0	6329		1770	0		0	7288	0	22053	
	6684	6260	0		0	7841	0	1838	0		0	1448	0	24071	
JULY	5492	9681	0		0	5520	1223	0	0		0	3082	0	24998	
	9654	11375	0		0	2600	4730	0	0		0	9845	4887	43091	
SEPT	12716	4020	0		0	5718	4221	0	0	90	0	1422	5643	33830	
	9286	12216	0		0	9222	8475	0	0	4132	0	9878	4293	57502	
NOV	10732	14007	0		0	7025	9335	969	0	5781	0	6993	5969	60811	
	10492	2185	798		1562	9207	5732	1462	0	0	0	7233	0	38671	
J2006	692	9865	956		5682	8077	2745	4273	0	1627	0	2116	180	36213	
	4942	3392	352		2517	3880	2730	1676	0	2268	0	7540	1274	32743	
MAR	10092	0	1632		7835	12397	0	2249	0	1783	0	1050	8729	45767	
	142	6096	0		6518	7409	4043	80	0	0	0	7265	903	32456	
MAY	4170	14148				12511	5586	4785		1635		2201	13045	58081	
	5557	8913				12841	10605	1941		6886		5514	7207	59464	
JULY	7608	3592				6706	3959	5885		0		3704	2155	33609	
	6995	1070				11503	2970	1759		1884		2404	6645	35230	
SEPT	5896	0				12178	0	1330		2553	500	6765	5262	34484	
	4675	0		3764	14780	12130	6911	37		1658	6396	372	0	50723	

TABLE 2D - WELLS OF INTEREST

WELL NUMBER	RIG NAME	CLASSIFICATION	ATD / TD (FT)
<u>BHR (LLC)</u>			
MAHOGANY A 2X ST-1	GSF MONITOR	DEVELOPMENT	15538/15600
<u>EOG RESOURCES (T/DAD) PET LTD</u>			
OILBIRD A2	ROWAN GORILLA 111	DEVELOPMENT	15045/14780
<u>TALISMAN (T/DAD) PET LTD</u>			
SHANDON BENI-1 ST2	TODCO #36	EXPLORATORY	15132/14616
<u>PETROTRIN - TRINMAR</u>			
SOLDADO 868 ST	CDTOL RIG #110	DEVELOPMENT	8650/7898
SOLDADO 869 ST	CDTOL RIG #110	DEVELOPMENT	6422/4675
<u>PRIMERA OIL & GAS LTD</u>			
FYZABAD 291	TDN #5	DEVELOPMENT	3000/3082
FYZABAD 292	TDN #5	DEVELOPMENT	2420/682
<u>PETROTRIN (FARMOUT)</u>			
QUARRY 432	DISSL RIG #2	DEVELOPMENT	1450/137
<u>PETROTRIN (LEASE OPERATORS)</u>			
PALO SECO 127X	WSPCL RIG #4	DEVELOPMENT	4700/4700
PALO SECO 133X	WSPCL RIG #4	DEVELOPMENT	6370/3858
<u>PETROTRIN</u>			
BARRACKPORE 600	WSPCL RIG #2	DEVELOPMENT	4200/4190
BARRACKPORE 601	WSPCL RIG #2	DEVELOPMENT	6840/5118
CENTRAL LOS BAJOS 310	WSPCL RIG #20	DEVELOPMENT	1426/1625
PARRYLANDS 'E' 264ST	WSPCL RIG #20	DEVELOPMENT	4000/4720
<u>BRITISH GAS (C/BLOCK)</u>			
BARAKA EAST 1	NABORS 116	EXPLORATORY	11750/6896
<u>BRITISH GAS T&T (NCMA)</u>			
CHACONIA 3	GSF ALEUTIAN KEY	DEVELOPMENT	11750/10318
<u>BHP BILLITON (T/DAD) LTD</u>			
KAIRI B11	NABORS 657	DEVELOPMENT	6289/372
RUBY 1	NABORS 657	EXPLORATORY	6948/6765

2.6

TABLE 2E - WELL COMPLETIONS

COMPANY	OIL	GAS	OTHER	TOTAL
BRITISH GAS T&T (NCMA)		1		1
PETROTRIN (FO)	2			2
PETROTRIN (LO)	1			1
TOTAL	3	1		4
LAND	3			3
MARINE		1		1

3

NATURAL GAS PRODUCTION AND UTILIZATION

3.1

TABLE 3A - NATURAL GAS PRODUCTION BY COMPANY

COMPANY	DAILY AVERAGE (MMSCF/D)		
	OCT-06	SEPT-06	YEAR TO DATE
BPTT	2075	2135	2273
TRINMAR	45	43	45
PETROTRIN	6	7	7
PRIMERA	0	0	0
TRINTOMAR	0	0	0
EOG RESOURCES	392	412	453
COASTLINE (CII)	0	0	0
BRITISH GAS	759	893	845
MORAVEN	0	0	0
BHP BILLITON	203	212	201
REPSOL	38	37	36
TOTAL	3518	3739	3861

3.2

TABLE 3B - NATURAL GAS UTILIZATION BY SECTOR

SECTOR	DAILY AVERAGE (MMSCF/D)		
	OCT-06	SEPT-06	YEAR TO DATE
POWER GENERATION	249.36	254.22	251.73
AMMONIA MANUFACTURE	528.44	536.56	521.09
METHANOL MANUFACTURE	595.57	580.12	554.22
IRON & STEEL MANUFACTURE	53.52	54.99	73.11
CEMENT MANUFACTURE	10.48	12.11	12.44
REFINERY	37.03	24.14	37.15
UREA MANUFACTURE	10.22	11.85	11.63
GAS PROCESSING	29.85	35.99	29.17
SMALL CONSUMERS	11.04	12.33	12.18
*FUEL USED IN FIELD	16.00	26.00	36.11
GAS INJECTION	259.54	273.52	259.12
LIQUIFIED NATURAL GAS (LNG)	1697.66	1914.18	1997.31
TOTAL	3498.71	3736.01	3795.24

3.3

	DAILY AVERAGE (MMSCF/D)		
	OCT-06	SEP-06	YEAR TO DATE
DOMESTIC GAS SALES	1515.41	1501.32	1480.43

Footnotes:

1 Difference between production and utilization for each month is due to natural gas lost, vented (includes flared) and not collected.

2 Re - Injection from BHP Billiton and Repsol.

*MOE Estimates

CRUDE OIL - IMPORTS, EXPORTS AND REFINING**4.1** TABLE 4A - IMPORTS (bbbls)

CRUDE TYPE	THIS MONTH
CONGO / REMBOU BLEND	380,903
VASCONIA	522,321
BIJUPIRA / SALEMA CRUDE	611,756
CONGO COMPOSITE	353,439
MARLIM CRUDE	624,578
ANTAN / REMBOUE BLEND	700,270

4.2 TABLE 4B - EXPORTS (bbbls)

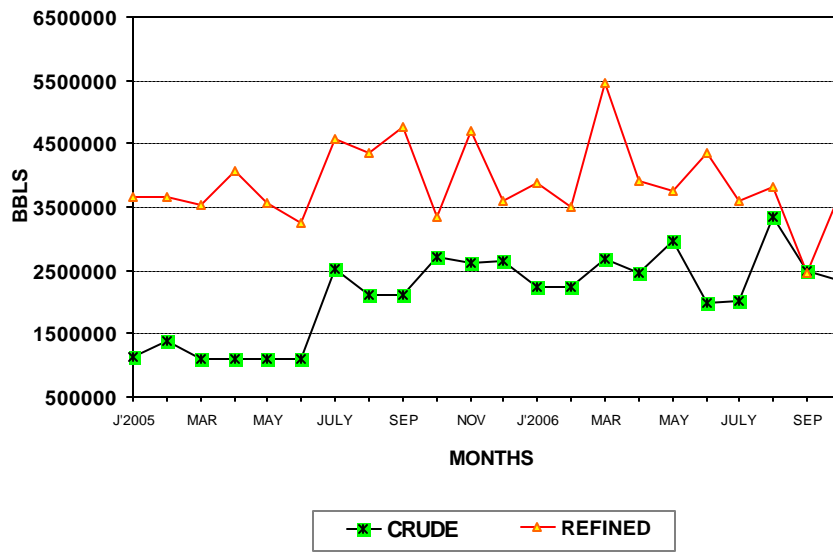
CRUDE	THIS MONTH
GALEOTA MIX	1,316,942
CALYPSO CRUDE	1,018,461
TOTAL	2,335,403

4.3 TABLE 4C - REFINERY SALES (bbbls)

PRODUCT	LOCAL	EXPORTS
LPG	51,894	56,162
MOTOR GAS	291,134	782,189
AV. GAS	87	2,724
KEROSENE/JET	58,705	282,967
GAS/DIESEL OIL	227,331	1,004,939
FUEL OIL	2471	1,407,504
ASPHALTIC PRODUCTS	0	453

4.4

**GRAPH 4A - EXPORTS - CRUDE AND REFINED PRODUCTS
JANUARY 2005 - OCTOBER 2006**



MONTHS	CRUDE	REFINED
J'2005	1143364	3652435
FEB'05	1378338	3659871
MAR'05	1113176	3542681
APR'05	1104476	4055834
MAY'05	1110765	3565599
JUN'05	1112516	3256698
JULY	2512808	4557966
AUG'05	2118724	4357996
SEP	2115449	4754575
OCT'05	2695814	3337521
NOV	2621005	4707980
DEC'05	2645190	3580338
J'2006	2242633	3877913
FEB'06	2242633	3486679
MAR	2692067	5468576
APR'06	2470290	3912360
MAY	2951658	3759145
JUN'06	1979840	4341408
JULY	2002980	3581176
AUG'06	3350550	3812500
SEP	2477381	2450311
OCT'06	2335403	3756299

4.5

TABLE 4D - REFINERY OUTPUT (bbls)

PRODUCT	THIS MONTH	LAST MONTH
LPG	99,591	55,918
MOTOR GAS	1,020,276	318,809
AV.GAS	572	875
KEROSENE/AVJET	543,460	268,225
GAS/DIESEL OIL	801,706	368,722
FUEL OIL	1,811,822	719,567
OTHER FINISHED & UNFIN. PRODUCTS	826,460	20,494
SULPHUR	(1442)	374
BITUMEN	33,115	13,366
LUBE OIL	140	36
PETROCHEMICALS	0	(65)
GAS/LOSS	88,557	168,902

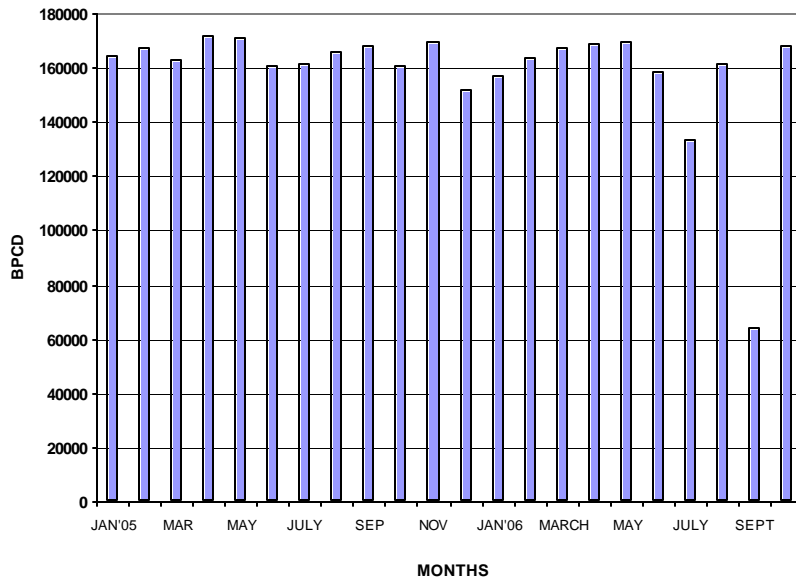
4.6

TABLE 4E - REFINERY THROUGHPUT (bpcd)

INSTALLATION	THIS MONTH	LAST MONTH
PETROTRIN (P.A.P)	168,524	64,507

4.7

GRAPH 4B - REFINERY THROUGHPUT
JANUARY 2005 - OCTOBER 2006



JAN'05	164422
	167151
MAR	162872
	171589
MAY	171086
	160744
JULY	161688
	165870
SEP	168237
	161059
NOV	169353
	152031
JAN'06	157437
	164108
MARCH	167652
	169195
MAY	169486
	158884
JULY	133513
	161825
SEPT	64507
	168524

5

PETROCHEMICALS

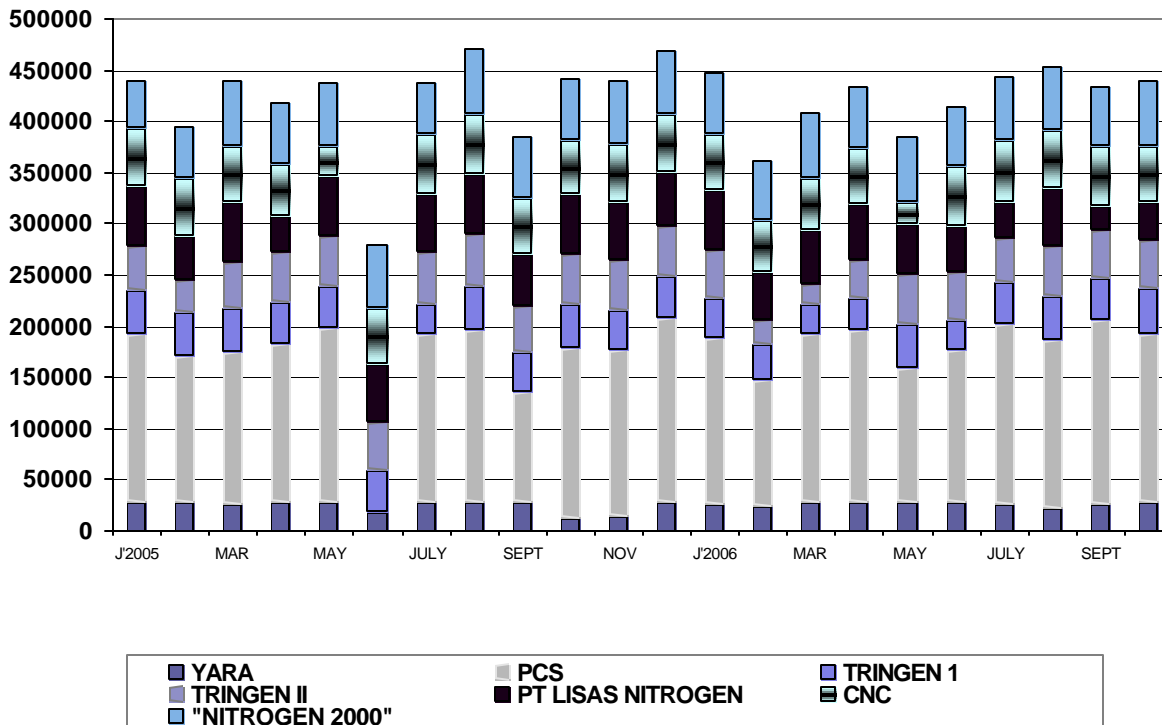
5.1

TABLE 5A - AMMONIA PRODUCTION AND EXPORTS (TONNES)

COMPANY	THIS MONTH		LAST MONTH	
	PROD	EXPORT	PROD	EXPORT
YARA (formerly Hydro-Agri)	26,539	24,701	25,496	24,736
TRINGEN 1	41,531	49,478	40,030	24,795
TRINGEN 2	44,758	41,356	47,209	29,200
PCS NITROGEN	163,779	143,882	179,598	172,612
CNC	54,871	57,492	59,754	77,211
POINT LISAS NITROGEN	36,604	0	23,609	61,217
NITROGEN 2000	63,902	54,052	58,831	71,293
TOTAL	431,984	370,961	434,527	461,064

5.2

GRAPH 5A - AMMONIA PRODUCTION
JANUARY 2005 - OCTOBER 2006



	YARA (HYDRO)	PCS NITR	TRINGEN 1	TRINGEN 11	PT.LISAS	NITROGEN	2000	TOTAL
					NITROGEN	(FARMLAND MISS)		
J'2005	26657	164857	43190	43238	57,021	58,352	46,997	440,312
	26970	143164	42111	32046	42,933	56,211	51,088	394,523
MAR	25080	148902	42404	46104	57,350	54,993	64,230	439,063
	26775	155442	40446	48480	36,207	49,238	61,927	418,515
MAY	27525	168845	41224	49803	57,539	30,519	61,148	436,603
	16696	0	41427	48209	54,885	56,208	62,086	279,511
JULY	27742	164340	29548	48912	57,662	58,331	51,801	438,336
	26381	169711	42961	49898	58,714	59,420	63,908	470,993
SEPT	26807	108802	38113	45952	49,848	54,580	59,778	383,880
	11169	166345	42587	49912	58,289	53,188	60,745	442,235
NOV	14551	161280	38709	48635	56,589	57,669	61,155	438,588
	27094	179974	40616	49228	51,780	56,659	63,635	468,986
J'2006	24845	161792	39036	48500	57,555	54,855	60,854	447,437
	23063	124039	35276	23061	46,659	51,267	58,018	361,383
MAR	27830	163995	28787	18900	53,602	50,894	63,862	407,870
	26516	168691	32177	37105	54,728	54,458	60,175	433,850
MAY	27,519	131,524	42,608	48,698	48,426	22,398	63,743	384916
	26566	148,464	29,827	46,673	44,975	58,349	59,718	414,572
JULY	26182	175710	39462	43966	35,099	60,209	63,015	443,643
	22358	162863	42411	49122	57,350	55,903	63,689	453,696
SEPT	25496	179598	40030	47,209	23,609	59,754	58,831	434,527
	28210	163779	43400	48,050	36,604	54,871	63,902	438,816

5.3

TABLE 5B - PHOENIX PARK GAS PROCESSORS LTD

PARAMETER (MSCF)	THIS MONTH		LAST MONTH	
INLET GAS	33,457,090		35,574,458	
RESIDUE GAS	32,641,494		34,997,500	
LPG (BBLs)	PROD	EXPORT	PROD	EXPORT
PROPANE	309,672	306,443	305,396	422,963
BUTANE	272,680	288,941	287,820	380,230
NATURAL GASOLENE	327,608	278,207	354,735	199,252

5.4

TABLE 5C - UREA / METHANOL PRODUCTION AND EXPORT (TONNES)

COMPANY	THIS MONTH		LAST MONTH	
	PROD	EXPORT	PROD	EXPORT
PCS NITROGEN (UREA)	45,132	50,595	577,787	45,991
TTMC 1	30,189	26,407	31,851	25,177
TTMC 11	34,315	0	48,571	0
METHANOL IV	49,018	0	49,583	0
CARIBBEAN METHANOL	46,427	301,885	45,094	220,606
METHANEX (formerly TITAN METHANOL)	79,760	94,429	66,931	52,593
M5000	153,111	0	114,726	0
ATLAS METHANOL	147,330	176,425	141,317	119,472

5.5

TABLE 5D - ATLANTIC LNG PLANT OPERATIONS

PARAMETER	THIS MONTH	LAST MONTH
INLET GAS	(MMBTU)	(MMBTU)
TRAIN 1	15,831,579	12,279,840
TRAIN 2	16,641,593	13,136,409
TRAIN 3	18,935,709	18,380,881
TRAIN 4	3,917,942	17,476,055
TOTAL	55,326,823	61,273,185

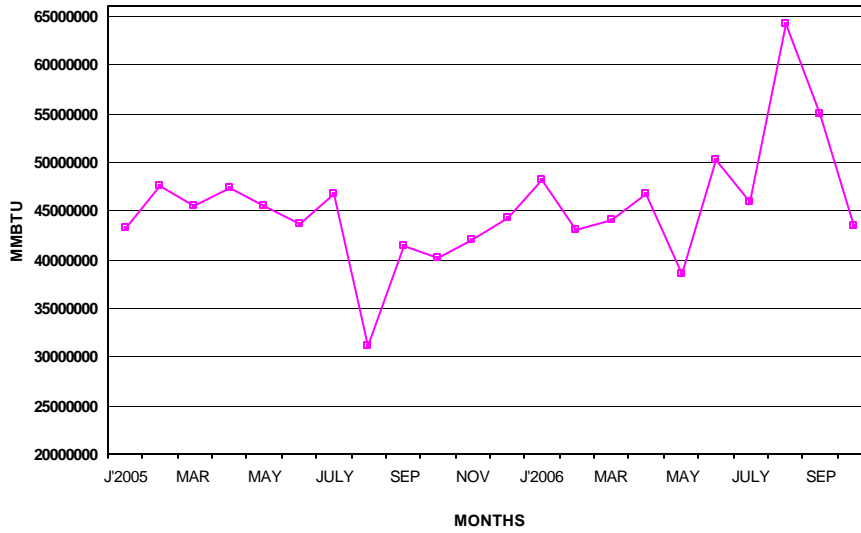
5.6

TABLE 5E - LNG/NGL PRODUCTION AND SALES

PARAMETER	THIS MONTH			LAST MONTH		
	PROD	SALES		PROD	SALES	
LIQUEFIED NATURAL GAS	M ³	FOREIGN (MMBTU)	LOCAL (BBLs)	M ³	FOREIGN (MMBTU)	LOCAL (BBLs) (BBLs)
TRAIN 1	577,021	13,637,327	-	454,769	12,546,167	-
TRAIN 2	637,268	13,439,795	-	510,539	11,565,609	-
TRAIN 3	697,947	16,379,904	-	690,604	12,661,984	-
TRAIN 4	121,998	0	-	643,010	18,045,795	-
TOTAL	2,034,234	43,457,026	-	2,298,922	54,819,555	-
NATURAL GAS LIQUIDS						
TRAIN 1	-	-	173,085	-	-	145,030
TRAIN 2	-	-	72,880	-	-	52,712
TRAIN 3	-	-	171,201	-	-	158,771
TRAIN 4	-	-	0	-	-	107,134
TOTAL	-	-	417,166	-	-	463,647

5.7

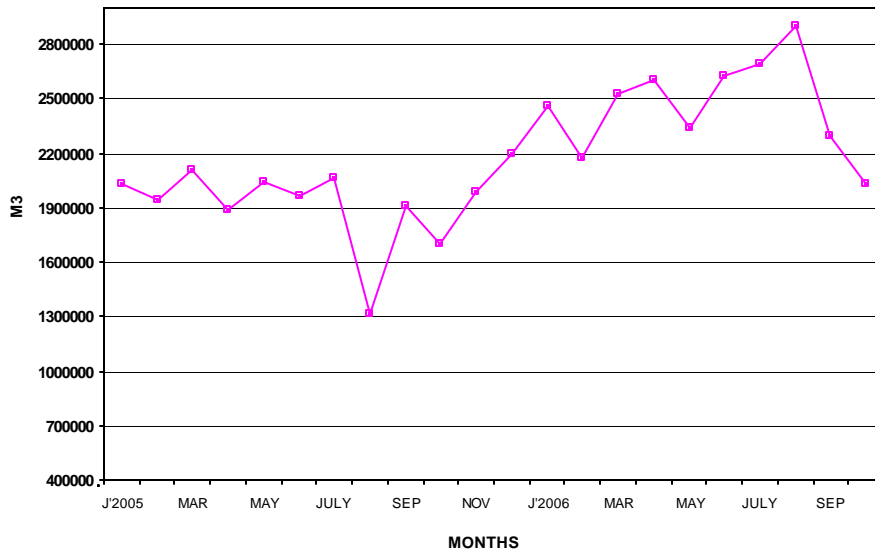
GRAPH 5D - ATLANTIC LNG EXPORTS
JANUARY 2005 - OCTOBER 2006



MONTHS	MMBTU
J2005	43297168
FEB 2005	47571196
MAR 2005	45440603
APR 2005	47398364
MAY 2005	45417441
JUN 2005	43643998
JULY 2005	46723523
SEP 2005	41270888
NOV 2005	41936562
J2006	48083227
FEB 2006	43035243
MAR 2006	44039056
MAY 2006	38385990
JULY 2006	45939881
SEP 2006	54819555
	43457026

5.8

GRAPH 5E - ATLANTIC LNG PRODUCTION
JANUARY 2005 - OCTOBER 2006



MONTHS	M ³
J2005	2,033,348
FEB 2005	1,936,902
MAR 2005	2,111,683
APR 2005	1,888,621
MAY 2005	2,038,443
JUN 2005	1,965,295
JULY 2005	2,062,728
SEP 2005	1,914,515
NOV 2005	1,987,233
J2006	2,458,505
MAR 2006	2,521,785
MAY 2006	2,333,694
JULY 2006	2,691,857
SEP 2006	2,298,922
	2,034,234