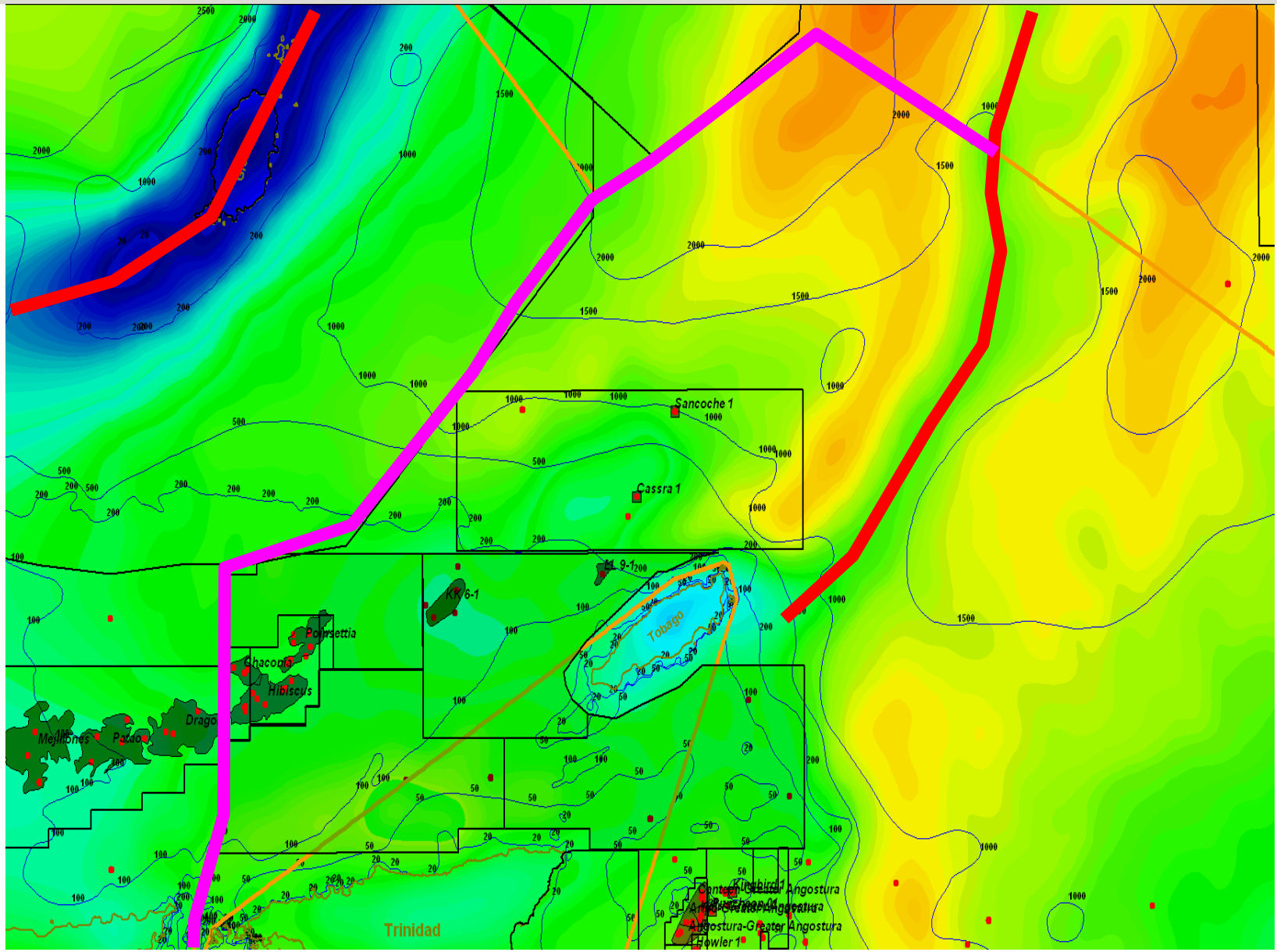


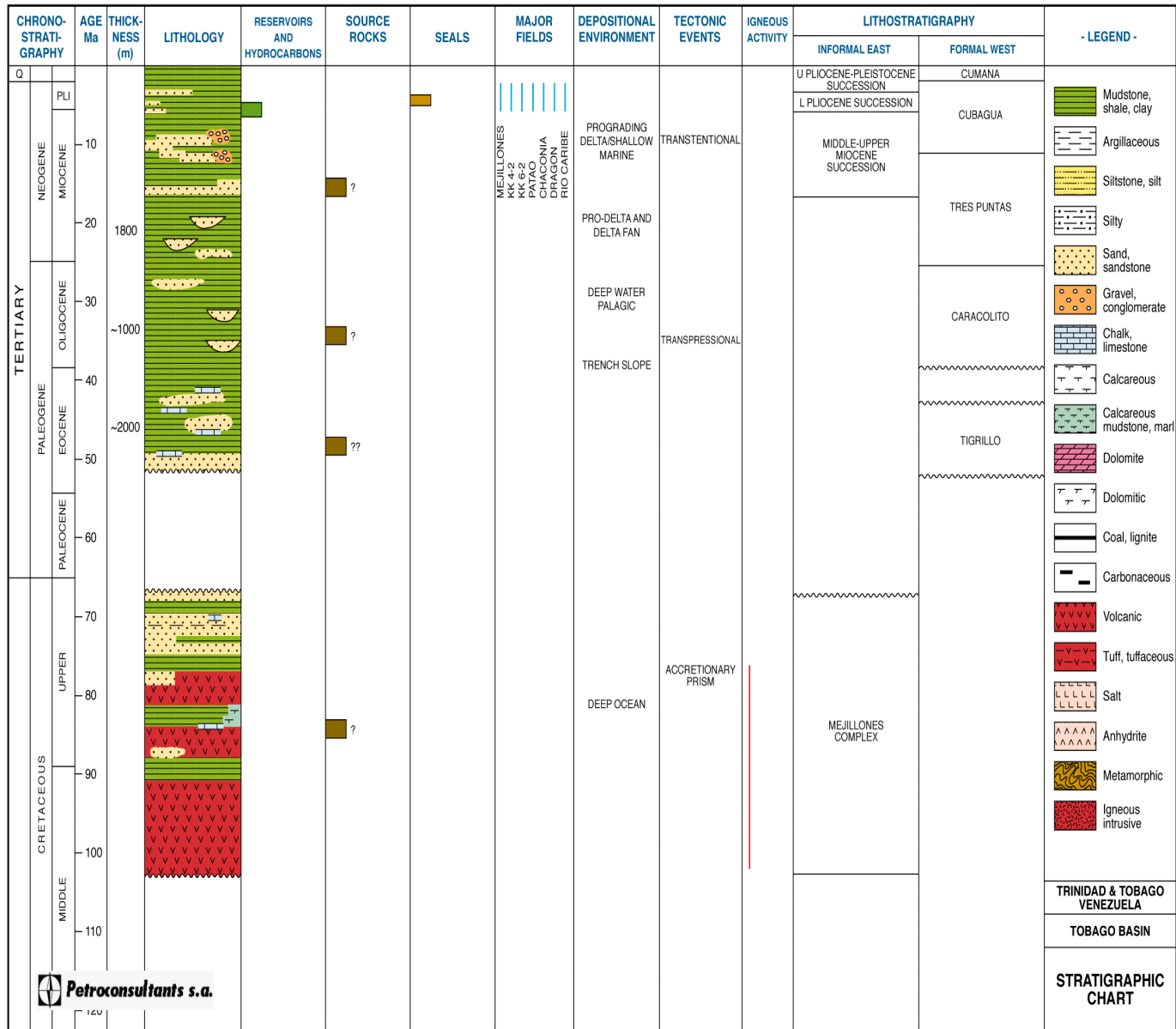
# **Tobago Trough MC2D**

**Trinidad & Tobago**

# Trinidad & Tobago: PGS MC2D - Tobago Basin



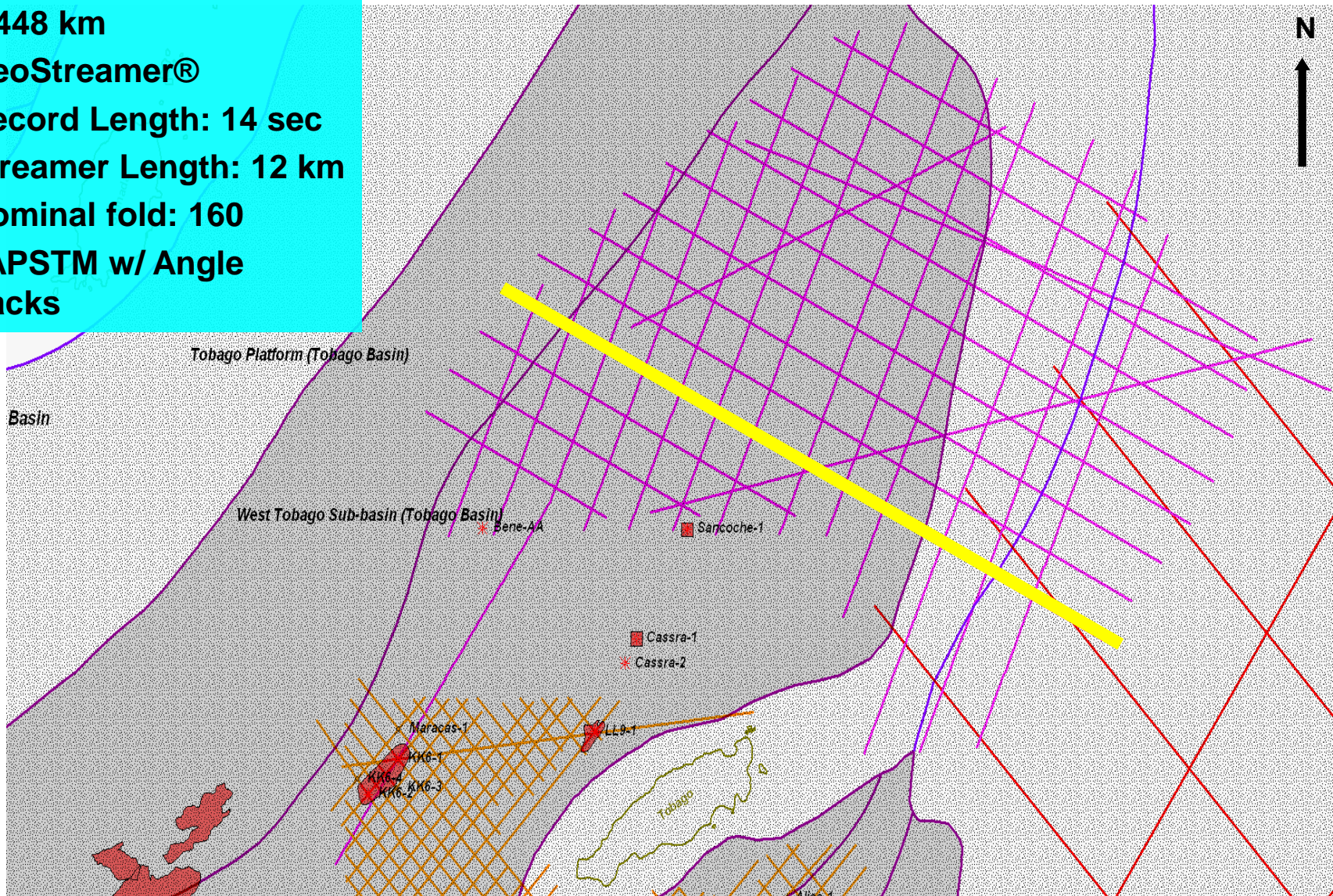
# Tobago Basin Stratigraphy





# PGS MC2D: TT Tobago Trough

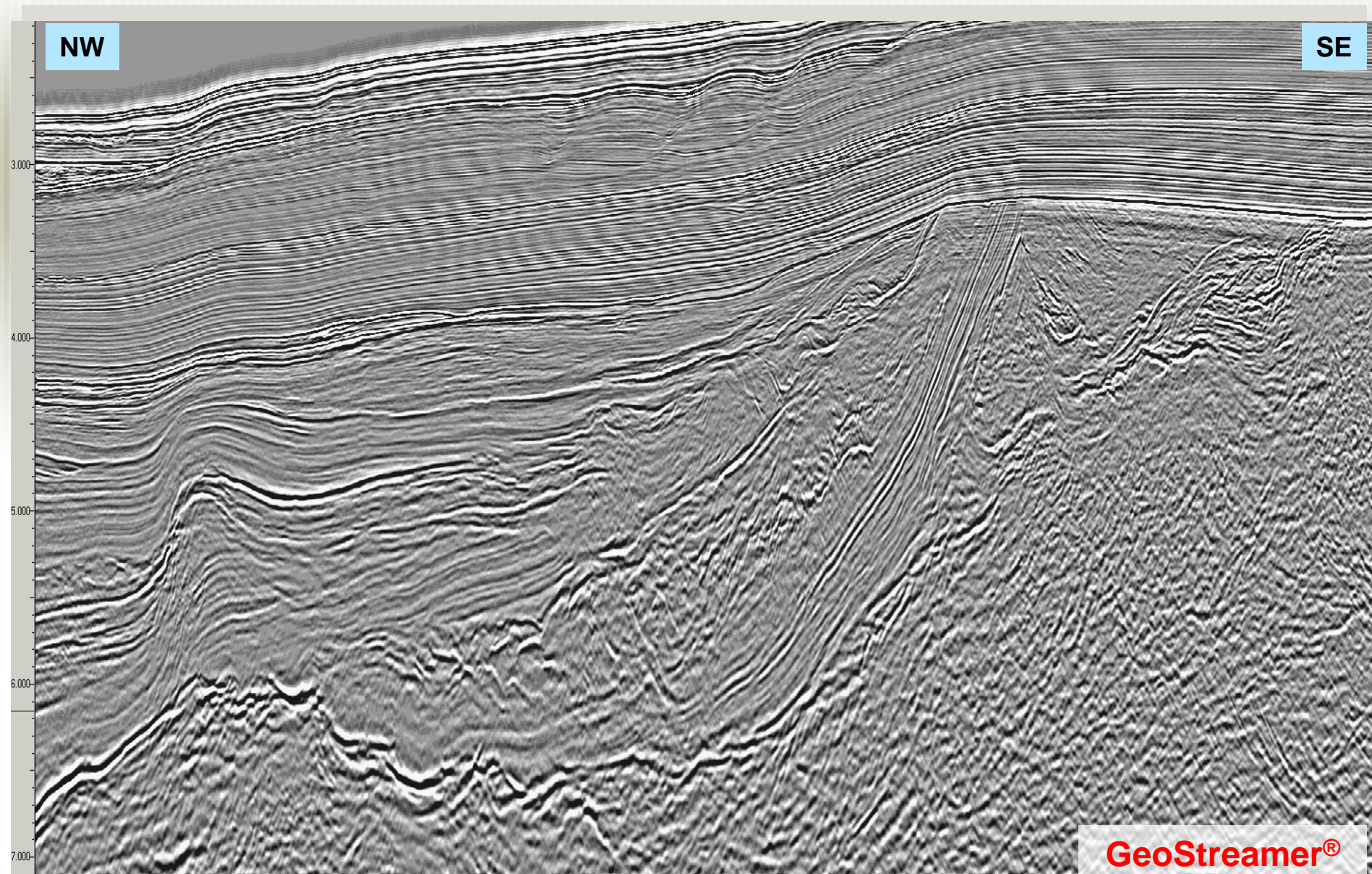
- 2,448 km
- GeoStreamer®
- Record Length: 14 sec
- Streamer Length: 12 km
- Nominal fold: 160
- TAPSTM w/ Angle Stacks







# PGS MC2D: TT Tobago Trough



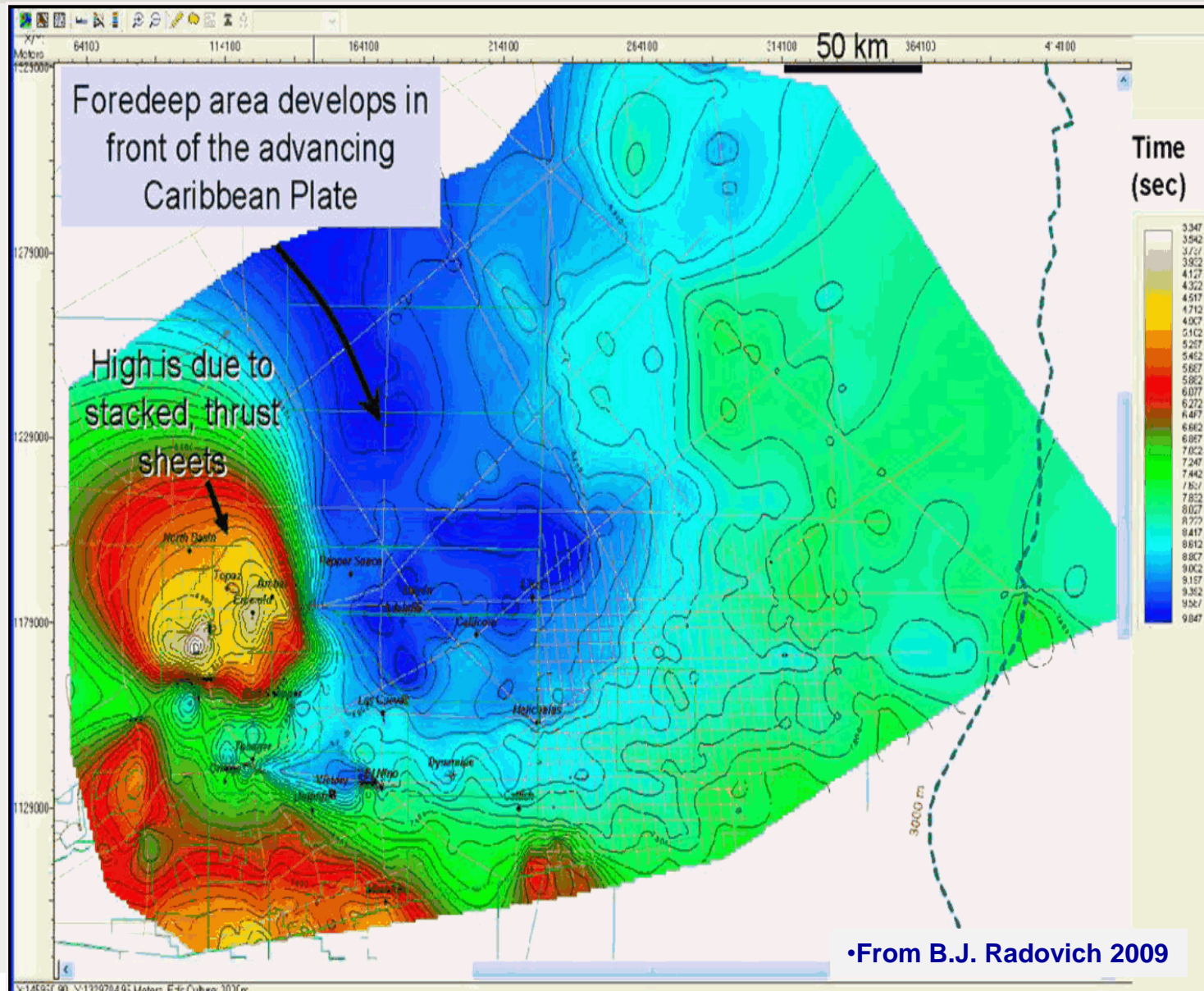
**GeoStreamer®**

# **Deepwater East Coast Marine Area (ECMA) MC2D**

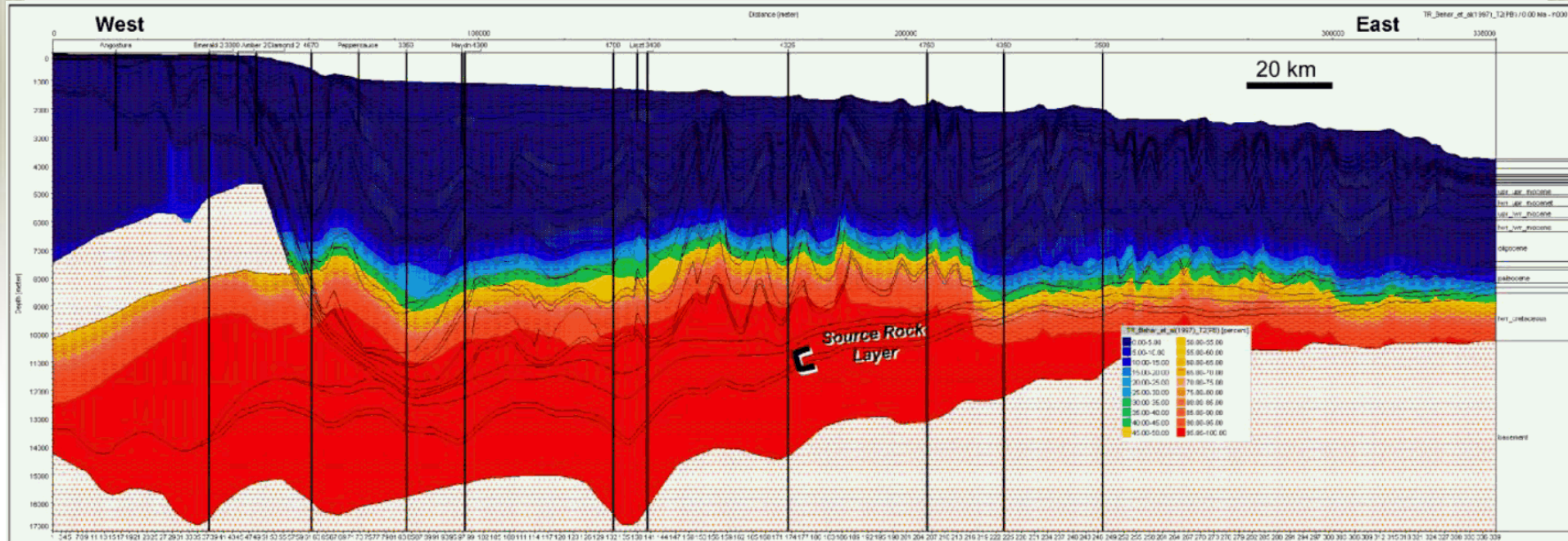
**Trinidad & Tobago**



# Cretaceous Isochron illustrating foredeep basin



# DW ECMA Maturation model

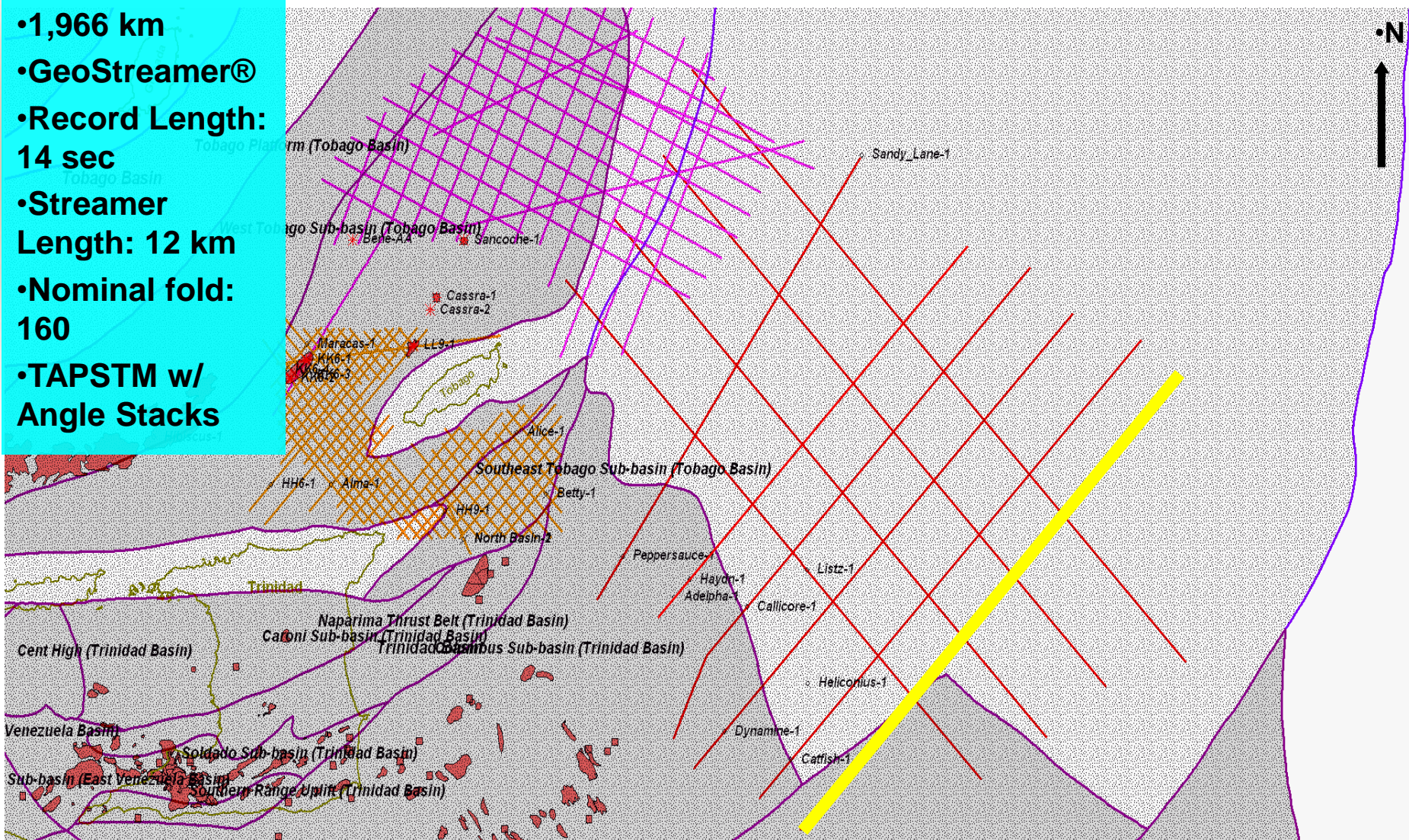


•Maturation model showing oil-prone petroleum system in the eastern part of the basin as a Cretaceous source rock shallows into the oil window.



# PGS MC2D: TT DW ECMA

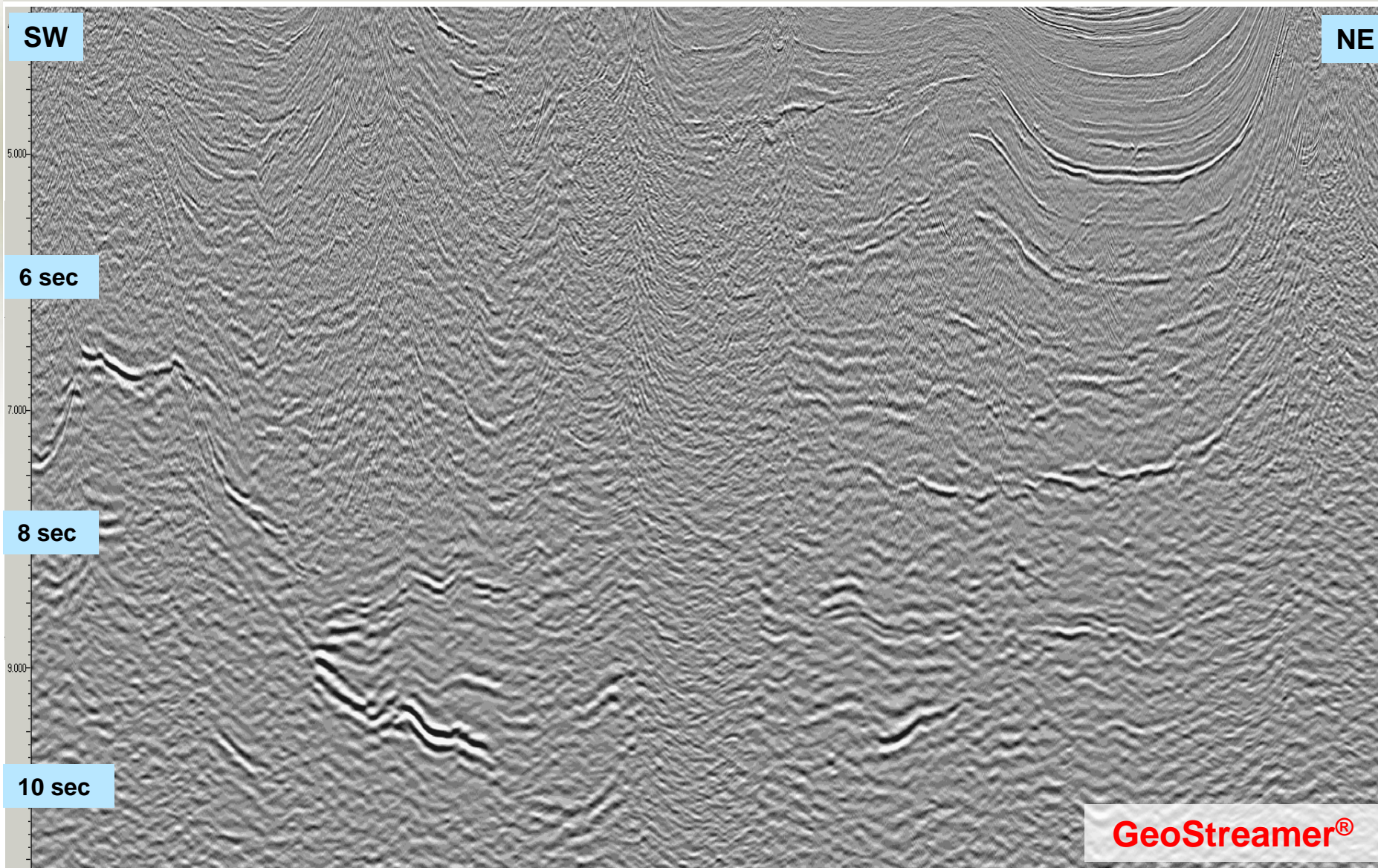
- 1,966 km
- GeoStreamer®
- Record Length: 14 sec
- Streamer Length: 12 km
- Nominal fold: 160
- TAPSTM w/ Angle Stacks







# PGS MC2D: TT DW ECMA





An aerial photograph of a red and white seismic survey ship sailing on a dark blue ocean. The ship is moving towards the right, leaving a white wake. A long line of yellow buoys extends from the ship towards the bottom left. The horizon is visible in the distance under a cloudy sky.

Thank You