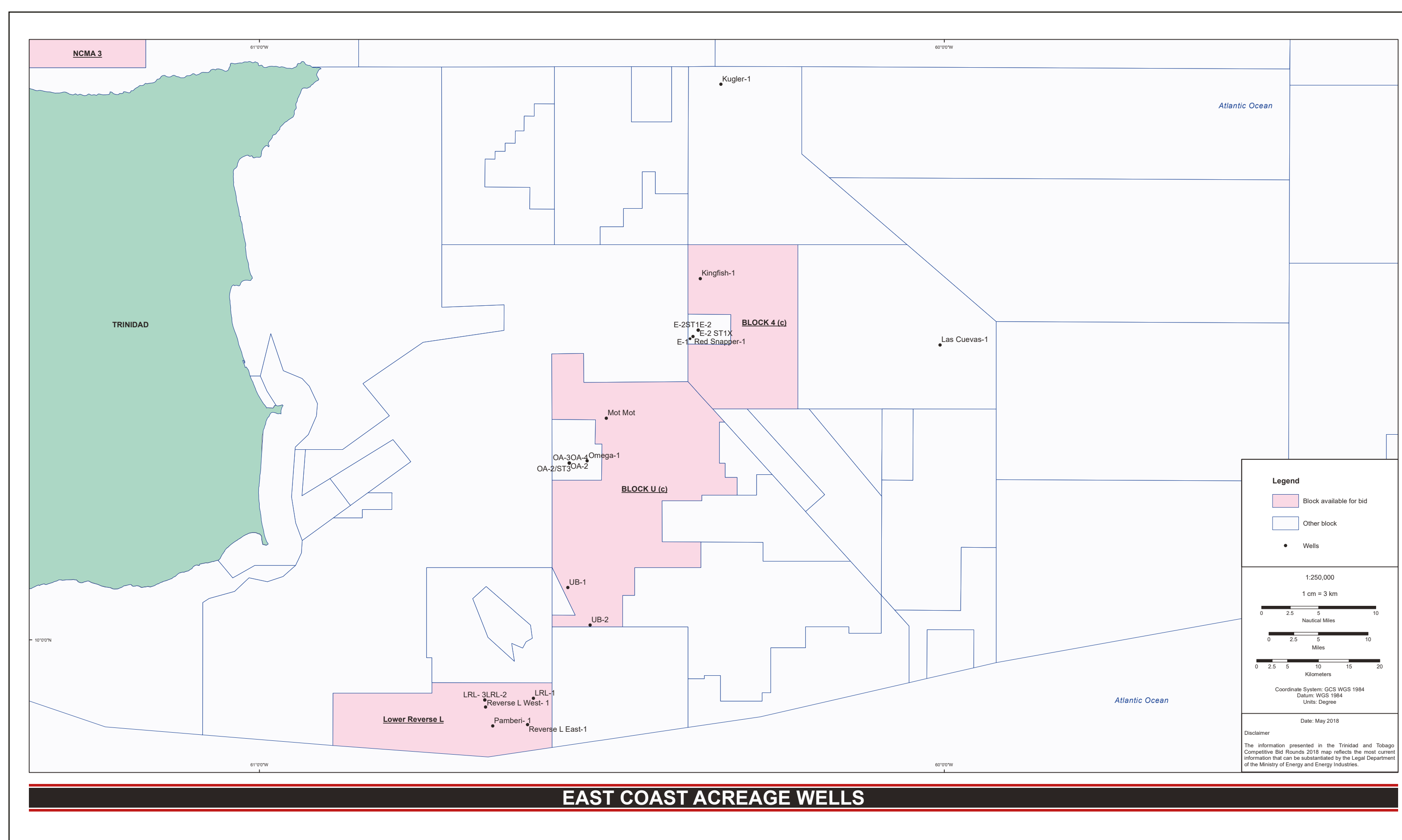


EAST COAST MARINE ACREAGE

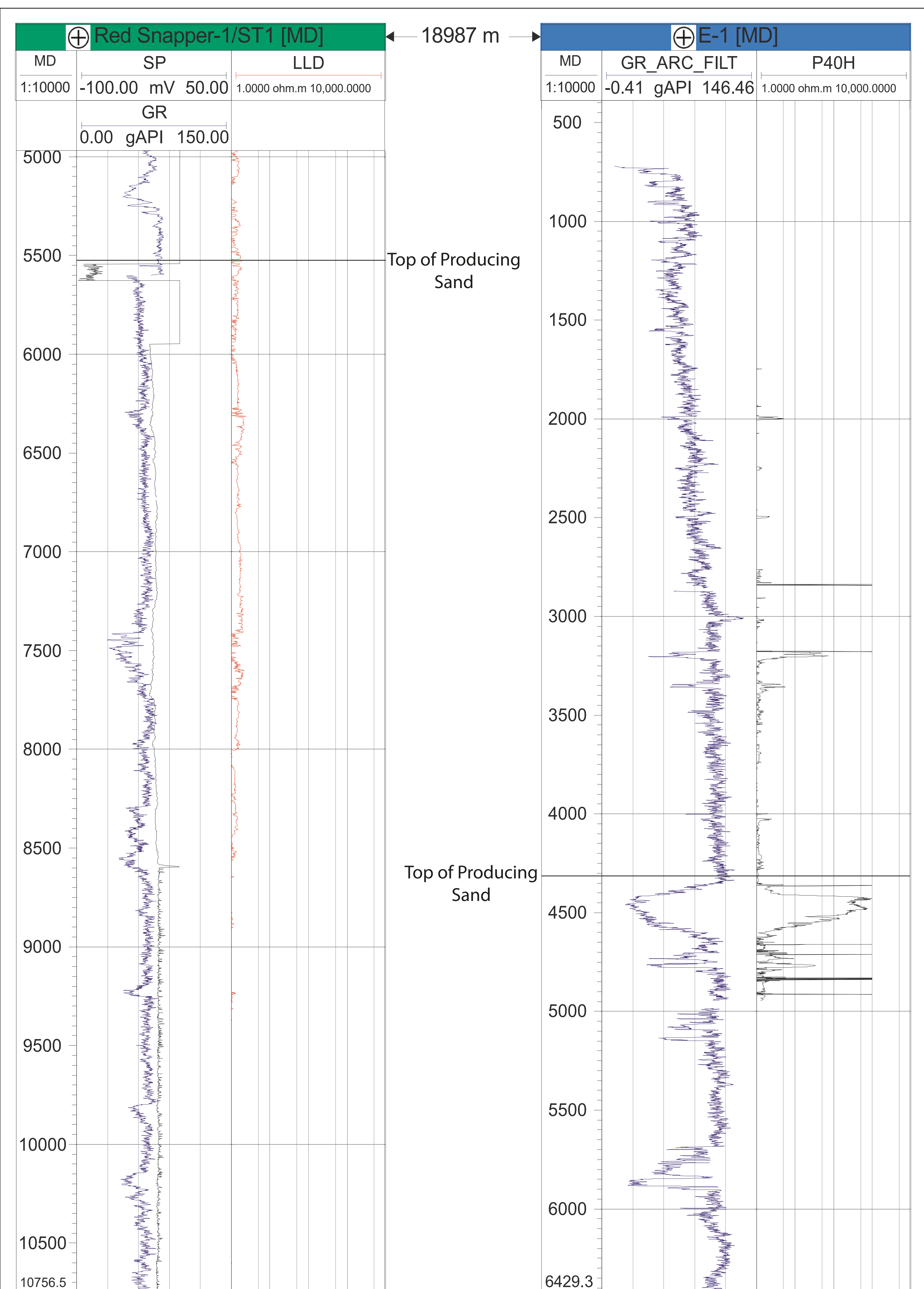


BLOCK U(c)

- Four-way and three-way structural closures trapped against NW-SE down to the east normal faults.
- Biogenic gas and condensate production in adjacent Osprey and Oilbird Fields.
- Producing sands:
 - Osprey Field - 7 Producing Sands (Pliocene)
 - Oilbird Field - 4 Producing Sands (Upper Pliocene), Erin Formation Equivalent.
- Facilities:
 - Osprey Field - 3-phase separator with a capacity of 200 mmscf/d.
 - Oilbird Field - production from platform at average 100 mmscf/d.

LOWER REVERSE L

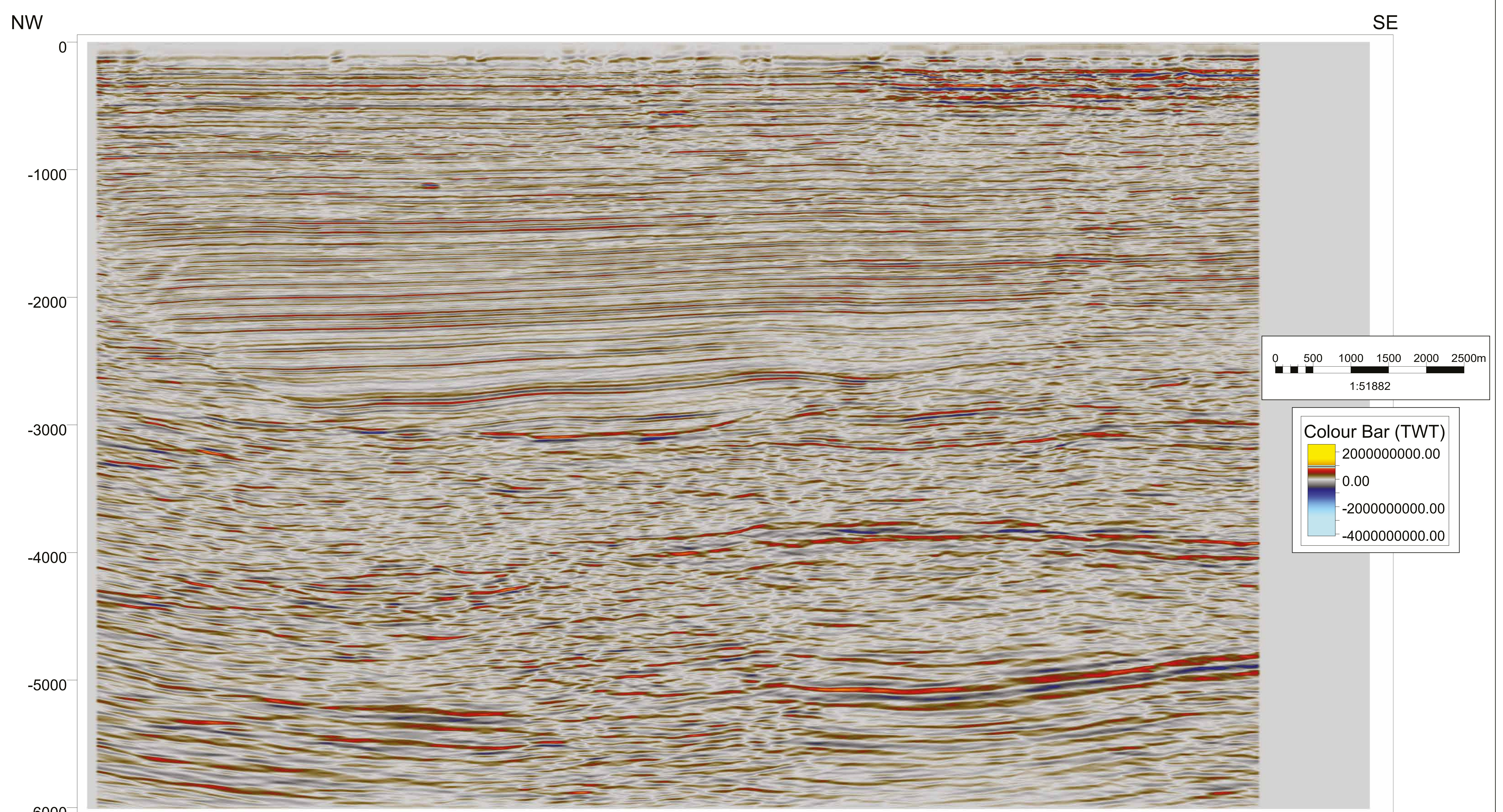
- Major closures seen from Middle Pliocene to Lower Miocene Sands.
- Wells within the acreage showed well developed sandstone, siltstones and possible reservoir sands.
- Exploration opportunities in the Pliocene/Miocene Sands.



Well Logs highlighting the Producing Sands

BLOCK 4(c)

- Prospects present along 2 ridges within the acreage.
- Producing (Pleistocene) Sands are the primary objective sands which show good reservoir development in the Block.
- Current production in nearby Toucan and EMZ Fields.
- Wells drilled show a pay thickness range from 113-270 ft and the average porosity between 33-37% for the producing sands.



General seismic line across the block showing major structures and sands