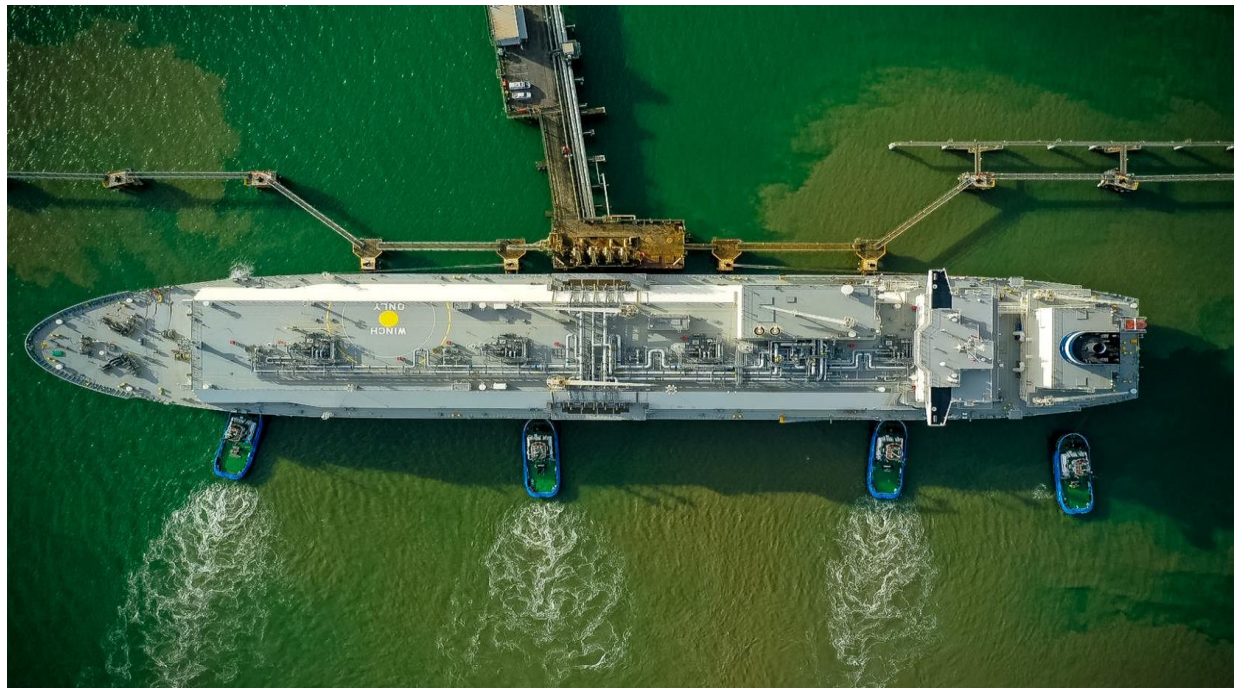




GOVERNMENT OF THE REPUBLIC OF TRINIDAD AND TOBAGO  
MINISTRY OF ENERGY AND ENERGY INDUSTRIES

CONSOLIDATED MONTHLY BULLETINS

**January-December 2024**



## DISCLAIMER FOR MEEI CONSOLIDATED MONTHLY BULLETINS

The Ministry of Energy & Energy Industries (MEEI) does not accept responsibility for the accuracy, correctness or completeness of the contents of the Consolidated Monthly Bulletins and shall not be liable for any loss or damage that may be a consequence of direct or indirect use of, or reliance on, the publication.

The MEEI takes reasonable measures to ensure the quality of the data contained in the publication at the time of distribution. However, data values in future Bulletins relating to previous periods are subject to amendment without notice. Organisations and individuals are asked to avail themselves of the most updated version of the Bulletins, when required.

The MEEI makes no assertions that this document is free of infection by computer viruses or other contamination and will not be held responsible for such losses and damages as a result of the infection.

Please note that totals may not be the exact sum of components due to rounding up/down.

Image on Cover Page: Preysal Fuel Service Station, Rivulet Road, Couva [Source: The National Gas Company CNG Limited]

## TABLE OF CONTENTS

	ABBREVIATIONS DISCLAIMER
<b>CRUDE OIL &amp; CONDENSATE PRODUCTION</b>	1A CRUDE OIL & CONDENSATE PRODUCTION 1B CONDENSATE PRODUCTION ONLY
<b>DRILLING, COMPLETIONS AND WORKOVERS</b>	2A RIGS IN USE 2B RIG DAYS 2C DEPTH DRILLED 2D WELLS OF INTEREST 2E WELL COMPLETIONS 2F MEEI APPROVED WORKOVERS COMPLETED AND WINCH HOURS
<b>NATURAL GAS PRODUCTION AND UTILIZATION</b>	3A NATURAL GAS PRODUCTION BY COMPANY 3B NATURAL GAS UTILIZATION BY SECTOR
<b>CRUDE OIL - IMPORTS, EXPORTS AND REFINING</b>	4A CRUDE OIL IMPORTS 4B CRUDE OIL EXPORTS 4C REFINERY SALES 4D REFINERY OUTPUT 4E REFINERY THROUGHPUT 4F PARI A FUEL TRADING REFINED PRODUCT IMPORTS 4G PARI A FUEL TRADING REFINED PRODUCT LOCAL SALES 4H PARI A FUEL TRADING REFINED PRODUCT EXPORTS
<b>NATURAL GAS PROCESSING AND PETROCHEMICALS</b>	5A PRODUCTION AND EXPORT OF NGLS FROM PPGPL 5B PRODUCTION AND EXPORT OF AMMONIA 5C PRODUCTION AND EXPORT OF DOWNSTREAM AMMONIA AND METHANOL 5D PRODUCTION AND EXPORT OF METHANOL 5E (I & II) LNG PRODUCTION FROM ALNG 5F(I & II) LNG EXPORTS FROM ALNG 5G NGL SALES & DELIVERIES FROM ALNG

## LIST OF ABBREVIATIONS USED

### Company and Facility Names

ALNG	- Atlantic LNG	NGC	- The National Gas Company of Trinidad & Tobago Ltd
ATLAS	- Atlas Methanol Plant	NHETT	- New Horizon Energy Trinidad and Tobago Ltd
AUM-NH3	- Ammonia Plant from AUM Complex	NUTRIEN 1,2,3,4	- Nutrien Ammonia Plants 1, 2, 3, 4 (Formerly PCS)
AVDWL	- A&V Drilling and Workover Limited	NUTRIEN (Urea)	- Nutrien Urea Plant
AVOGL	- A&V Oil & Gas Ltd	ORB	- Ortoire Block
BHP	- BHP Billiton Petroleum (Trinidad Block 3) Limited	PCSL	- Petroleum Contracting Services Limited
BOLT	- Beach Oilfield Trinidad Limited	PEREN	- Perenco Trinidad & Tobago
BPTT	- BP Trinidad and Tobago LLC	PLNL	- Point Lisas Nitrogen Ltd (formerly Farmland MissChem Ltd)
CEBL	- Columbus Energy Bonasse Ltd	POGTL	- Primera Oil & Gas T'dad Ltd
CESL	- Columbus Energy Services Ltd	PPGPL	- Phoenix Park Gas Processors Ltd
CGCL	- Caribbean Gas Chemical Ltd	PRIM	- Primera Oil and Gas Ltd (formerly PCOL)
CMC (M2)	- Caribbean Methanol Company Ltd (& Plant)	PTRIN	- Petroleum Company of Trinidad and Tobago Ltd
CNC	- Caribbean Nitrogen Company Ltd (& Plant)	RALCOFF	- Ralph Coffman Rig
DEEP INV	- Deepwater Invictus	REG ALL	- Regina Allen
DD 111	Development Driller 111	REXLII	- Rowan EXL II Rig
DENOVO	- DeNovo Energy	RG VI	- Rowan Gorilla VI
DOV	- Diamond Ocean Victory Rig	RPTTL	- Rocky Point T&T Ltd
EICL	- Eagle Ibis Consulting Ltd	RRDSL	- Range Resources Drilling Services Ltd
EOG	- EOG Resources Trinidad Ltd	SESL	- Summit Energy Services Limited ( HPCL LO)
FETL	- Fram Exploration Trinidad Limited	SES	- Summit Energy Services Limited
HPCL	- Heritage Petroleum Co Ltd	SHELL	- Shell Trinidad
HPCL (Offshore)	- Formerly Petrotrin Trinmar	SVDL	- Star Valley Drilling (Trinidad) Ltd
JOEDOUG	- Joe Douglas Rig	TDD 3	- Transocean Development Driller 3
LOL	- Lease Operators Ltd	TEPGL	- Trinity Exploration & Production (Galeota)Ltd
		TEPL	- Trinity Exploration & Production Ltd (Oilbelt)
LTL	- Leni Trinidad Ltd	TEPRL	- Trinidad Energy Production Resources Limited
MIV (M4)	- Methanol IV Company Ltd Plant	TETL	- Touchstone Exploration (Trinidad) Ltd
M5000 (M5)	- M5000 Methanol Plant	TITAN	- Titan Methanol Plant
MAERSK DEV	- Maersk Developer	TMAR	- Trinmar Strategic Business Unit, Petrotrin
MAERSK DIS	- Maersk Discoverer	TRINGEN I & II	- Trinidad Nitrogen Company Ltd Plants I & II
MAT1	- Matapal	TTMC I (M1)	- Trinidad and Tobago Methanol Company Ltd Plant I
MEPR	- Massy Energy Production Resources	TTMC II (M3)	- Trinidad and Tobago Methanol Company Ltd Plant II
MOCL	Moonsie Oil Co. Ltd	WSL	- Well Services Petroleum Company Limited
NOBLE RA	Noble Regina Allen	WEGL	- Woodside Energy
N2000	- Nitrogen 2000 Unlimited	WWL	- Walkerwell Limited
NCTTL	NABI Construction Trinidad and Tobago Limited	YARA	- Yara Trinidad Ltd

## LIST OF ABBREVIATIONS USED

Units		Products	
BBLS	- Barrels	CNG	- Compressed Natural Gas
BCPD	- Barrels of condensate per day	DME	- Di-Methyl Ether
BOPD	- Barrels of oil per day	LNG	- Liquefied Natural Gas
BPCD	- Barrels per calendar day	LPG	- Liquefied Petroleum Gas
FT (or ft)	- Feet	NGLs	- Natural Gas Liquids
M <sup>3</sup>	- Cubic Metres	NH <sub>3</sub>	- Ammonia
MMBTU	- Millions of British Thermal Units	UAN	- Urea Ammonium Nitrate
MMSCF	- Millions of Standard Cubic feet		
MMSCF/D	- Millions of Standard Cubic Feet per day		
MSCF	- Thousands of Standard Cubic Feet		
MT	- Metric Tonnes		
Other			
ATD	- Authorised Total Depth	MAT1	- Matapal
BOU2	Bounty Field	NCMA	- North Coast Marine Area
BTD3	- BLOCK TTDAA3	ORB	- Ortoire Block
CB	- Central Block	PAP	- Pointe-a-Pierre
DEV	- Development	PAR2	- Parula Field
ECMA	- East Coast Marine Area	RUB	- Ruby Field
EXPL	- Exploration	SMRB	- Ska Mento Reggae JV Block
FO	- Farmouts	ST	- Sidetrack
IPSC	- Incremental Production Service Contract	TD	- Total Depth
KIS	- Kiskadee	wef	- with effect from
KOP	- Kick-off Point	WO	- workover
LO	- Lease Operators		

**TABLE 1A - CRUDE OIL & CONDENSATE PRODUCTION IN 2024 (BOPD)**

Month	SHELL			BPTT	HPCL (Offshore)	HPCL (Land)	HPCL (LO)	HPCL (IPSC)	HPCL (FO)	TEPGL	PRIM	EOG	CEBL	LTL	DENOVO	TEPL	TEPRL	NHETT	LOL	SESL	WEGE	PEREN	SUBTOTAL		TOTAL
	East Coast	North Coast	Central Block																				LAND	MARINE	
Jan-24	1,196	35	199	4,381	17,687	9,644	5,344	1,304	422	76	514	1,041	0	17	1	417	76	73		24	2,628	4,978	17,617	33,293	50,909
Feb-24	1,206	35	220	4,520	17,091	9,588	5,260	1,291	401	71	412	1,048	0	20	1	395	71	76		25	1,484	4,773	17,364	31,465	48,829
Mar-24	1,181	36	161	4,275	17,339	9,683	5,305	1,194	321	69	332	969	0	18	1	467	69	69		31	2,725	4,761	17,183	32,668	49,851
Apr-24	1,120	32	224	4,816	17,945	9,830	5,287	1,370	382	83	256	1,025	0	18	1	454	83	59		32	2,687	4,863	17,541	33,797	51,338
May-24	1,172	36	182	4,209	17,913	9,959	5,183	1,457	347	92	211	981	0	19	1	436	92	62		29	2,595	4,586	17,543	32,765	50,307
Jun-24	1,147	30	176	2,825	17,857	10,118	5,263	1,333	318	101	147	979	0	12	1	428	101	82	13	28	168	4,646	17,590	28,844	46,434
Jul-24	1,115	26	156	4,365	17,292	9,847	5,518	1,474	373	96	140	1,072	0	13	1	447	96	59	12	25	2,700	4,553	17,713	32,345	50,058
Aug-24	1,029	33	162	4,534	17,328	9,737	5,233	1,682	357	89	100	2,040	0	18	1	423	89	57	13	27	3,201	4,420	17,475	33,785	51,260
Sep-24	784	33	190	5,258	18,177	9,550	5,244	1,578	450	75	117	2,163	0	25	1	441	75	81	12	26	2,656	6,426	17,347	36,785	54,131
Oct-24	1,126	33	185	4,459	17,530	9,658	5,186	1,577	452	66	72	1,964	8	14	1	386	66	57	12	23	2,576	7,338	17,310	36,243	53,553
Nov-24	1,089	33	173	4,201	17,398	9,704	5,057	1,508	419	78	564	1,517	3	14	1	461	78	56	12	20	2,175	7,090	17,607	35,123	52,731
Dec-24	1,064	33	186	3,905	16,341	9,485	5,142	1,595	386	98	309	<b>1,537</b>	4	14	1	477	98	52	11	16	2,146	7,246	17,297	33,906	51,203
<b>AVG 2024</b>	<b>1,103</b>	<b>33</b>	<b>184</b>	<b>4,312</b>	<b>17,490</b>	<b>9,734</b>	<b>5,252</b>	<b>1,448</b>	<b>385</b>	<b>83</b>	<b>264</b>	<b>1,363</b>	<b>1</b>	<b>17</b>	<b>1</b>	<b>436</b>	<b>83</b>	<b>65</b>	<b>7</b>	<b>26</b>	<b>2,321</b>	<b>5,474</b>	<b>17,465</b>	<b>33,426</b>	<b>50,892</b>

NOTE: Figure in **RED/Italics** is still preliminary at this time

NOTE: Totals may not be the exact sum of component figures due to rounding up/down.

TABLE 1B - CONDENSATE PRODUCTION (ONLY) IN 2024 (BOPD)									
Month	BPTT	SHELL			DENOVO	PRIMERA	EOG	NGC	TOTAL
		East Coast	North Coast	Central Block					
Jan-24	4,366	1,196	35	199	1	411	1,041	0	7,250
Feb-24	4,366	1,206	35	220	1	318	1,048	0	7,195
Mar-24	4,045	1,181	36	161	1	236	969	0	6,630
Apr-24	4,652	1,120	32	224	1	164	1,025	4	7,223
May-24	4,193	1,172	36	182	1	121	981	0	6,687
Jun-24	2,812	1,147	30	176	1	88	979	0	5,233
Jul-24	4,348	1,115	26	156	1	85	1,072	0	6,803
Aug-24	4,520	1,029	33	162	1	47	2,040	0	7,832
Sep-24	5,241	784	33	190	1	34	2,163	0	8,447
Oct-24	4,443	1,126	33	185	1	26	2,012	0	7,825
Nov-24	4,191	1,089	33	173	1	480	1,517	0	7,483
Dec-24	3,896	1,064	33	186	1	146	1,537	0	6,863
<b>AVG 2024</b>	<b>4,256</b>	<b>1,103</b>	<b>33</b>	<b>184</b>	<b>1</b>	<b>179</b>	<b>1,363</b>	<b>0</b>	<b>7,118</b>

NOTE: NGC production is condensate received at Beachfield from NGC offshore pipelines.

NOTE: Figure in **RED/Italics** is still preliminary at this time

TABLE 2A - DRILLING RIGS IN USE IN 2024

Month	MARINE			LAND				
	HPCL (Offshore)	BPTT	EOG	HPCL (Land)	HPCL(IPSC)	PRIM	HPCL (FO)	HPCL (LO)
Jan-24	-	Joe Douglas	Valaris 249	-	AVOGL#6	SVDL Rig 205	-	WSL#60, WSL#4, PCSL #8
Feb-24	-	Joe Douglas	Valaris 249	-	AVOGL#6	SVDL Rig 205	-	WSL#60, PCSL #8
Mar-24	-	Joe Douglas	Valaris 249	WSL # 80	AVOGL#6	SVDL Rig 205	-	WSL#60, PCSL #8
Apr-24	-	Joe Douglas	Valaris 249	WSL # 80	AVOGL#6	SVDL Rig 205	-	WSL# 4, PCSL #8
May-24	-	Joe Douglas	Valaris 249	WSL # 80	AVOGL#6	-	NCTTL#5	WSL# 4, PCSL #8
Jun-24	-	Joe Douglas	Valaris 249	WSL # 80	-	-	NCTTL#5	SESL RIG #10, WSL# 4
Jul-24	-	Joe Douglas	Valaris 249	-	-	-	NCTTL#5	WSL# 4
Aug-24	WSL # 110	Joe Douglas	-	WSL # 80	-	-	NCTTL#5	WSL# 4
Sep-24	WSL # 110	Joe Douglas	-	WSL # 80	-	-	NCTTL#5	PCSL #8
Oct-24	WSL # 110	Joe Douglas	-	-	-	-	NCTTL#5	PCSL #8
Nov-24	WSL # 110	Joe Douglas	Valaris 249	-	-	-	NCTTL#5	PCSL #8
Dec-24	WSL # 110	Joe Douglas	Valaris 249	-	-	-	NCTTL#5	PCSL #8



TABLE 2B - RIG DAYS IN 2024									
Month	EOG	HPCL (Land)	BPTT	HPCL (FO)	HPCL (Offshore)	HPCL (LO)	PRIM	HPCL (IPSC)	TOTAL
Jan-24	16	0	1	0	0	28	26	14	85
Feb-24	2	0	17	0	0	44	27	7	97
Mar-24	31	12	31	0	0	33	31	27	165
Apr-24	30	19	15	0	0	39	4	28	135
May-24	31	17	26	3	0	34	0	25	136
Jun-24	30	26	30	16	0	30	0	0	132
Jul-24	21	0	31	13	0	20	0	0	85
Aug-24	0	11	31	13	11	22	0	0	88
Sep-24	0	1	30	2	30	6	0	0	69
Oct-24	0	0	31	13	11	20	0	0	75
Nov-24	10	0	24	8	26	3	0	0	71
Dec-24	31	0	30	15	3	17	0	0	96
<b>TOTAL</b>	<b>202</b>	<b>86</b>	<b>297</b>	<b>83</b>	<b>81</b>	<b>296</b>	<b>88</b>	<b>101</b>	<b>1,234</b>

TABLE 2C - DEPTH DRILLED IN 2024 (FT)									
Month	BPTT	EOG	HPCL (Land)	HPCL (Offshore)	HPCL (IPSC)	HPCL (FO)	HPCL (LO)	PRIM	TOTAL
Jan-24	0	0	0	0	5,185	0	9,476	5,999	20,660
Feb-24	1,889	4,743	0	0	2,525	0	8,730	1,133	19,020
Mar-24	7,589	14,657	4,671	0	9,067	0	4,954	8,252	49,190
Apr-24	3,772	2,646	7,200	0	7,681	0	11,036	0	32,335
May-24	8,450	12,732	5,501	0	7,012	124	5,537	0	39,356
Jun-24	5,245	3,048	5,179	0	0	1,296	5,720	0	20,488
Jul-24	9	0	0	0	0	1,362	8,424	0	9,795
Aug-24	3,889	0	0	2,813	0	1,362	8,009	0	16,073
Sep-24	3,306	0	0	6,872	0	109	179	0	10,466
Oct-24	3,752	0	0	3,886	0	1,311	6,230	0	15,179
Nov-24	2,276	4,900	0	6,148	0	900	47	0	14,271
Dec-24	10,063	7,353	0	2,071	0	1,079	4,064	0	24,630
<b>TOTAL</b>	<b>50,240</b>	<b>50,079</b>	<b>22,551</b>	<b>21,790</b>	<b>31,470</b>	<b>7,543</b>	<b>72,406</b>	<b>15,384</b>	<b>271,463</b>

TABLE 2D - WELLS STARTED IN 2024

COMPANY/OPERATOR	FIELD/BLOCK	WELL NUMBER	RIG NAME	CLASSIFICATION	DATE SPUDED	DATE COMPLETED	TD (ft)	ATD (ft)
Heritage Petroleum Co Ltd (IPSC)	CAT	CAT-LAND-207	AVOGL#6	DEV	6-Jan-24	12-Jan-24	2,746	2,700
Heritage Petroleum Co Ltd (IPSC)	CAT	CAT-LAND-207X	AVOGL#6	DEV	19-Jan-24	-	2,536	2,700
PRIMERA	ORB	ORB-LAND-CASCADURA-2ST1	SVDL RIG 205	DEV	6-Jan-24	-	7,132	8,300
Heritage Petroleum Co Ltd (LO)	PAS3	PAS3-LAND-616	WSL#60	DEV	18-Jan-24	24-Jun-24	8,900	8,900
Heritage Petroleum Co Ltd (LO)	PAR4	PAR4-LAND-380	WSL#4	DEV	12-Jan-24	3-Apr-24	4,325	4,314
Heritage Petroleum Co Ltd (LO)	QUA3	QUA3-LAND-525	PCSL #8	DEV	31-Jan-24	-	4,250	4,250
EOG	PAR2	PAR2-OIA-PAR2_11	VALARIS 249	EXPL A.1	28-Feb-24	20-Nov-24	22,046	20,688
BPTT	CYP	CYP-NOP-01	JOEDOUG	DEV	13-Feb-24	19-Aug-24	9,657	9,701
Heritage Petroleum Co Ltd (IPSC)	CAT	CAT-LAND-208	AVOGL#6	DEV	19-Feb-24	-	2,525	2,500
Heritage Petroleum Co Ltd (LO)	COO1	COO1-LAND-374	PCSL #8	DEV	28-Feb-24	27-May-24	5,685	6,591
PRIMERA	ORB	ORB-LAND-CASCADURA-3ST1	SVDL Rig 205	DEV	1-Mar-24	-	8,252	8,300
Heritage Petroleum Co Ltd (LAND)	PFE	PFE-LAND-233	WSL#80	DEV	20-Mar-24	14-May-24	4,671	4,652
Heritage Petroleum Co Ltd (IPSC)	CAT	CAT-LAND-209	AVOGL#6	DEV	3-Mar-24	-	2,450	2,500
Heritage Petroleum Co Ltd (IPSC)	CAT	CAT-LAND-210	AVOGL#6	DEV	11-Mar-24	-	2,467	2,500
Heritage Petroleum Co Ltd (IPSC)	CAT	CAT-LAND-211	AVOGL#6	DEV	19-Mar-24	-	2,403	2,500
Heritage Petroleum Co Ltd (IPSC)	CAT	CAT-LAND-212	AVOGL#6	DEV	29-Mar-24	-	2,357	2,500
Heritage Petroleum Co Ltd (LAND)	PAS	PAS-LAND-618	WSL#80	DEV	8-Apr-24	30-May-24	5,180	5,220
Heritage Petroleum Co Ltd (LAND)	QUA	QUA-LAND-526	WSL#80	DEV	26-Apr-24	25-May-24	3,800	3,800
Heritage Petroleum Co Ltd (IPSC)	CAT	CAT-LAND-213	AVOGL#6	DEV	5-Apr-24	-	2,400	2,500
Heritage Petroleum Co Ltd (IPSC)	CAT	CAT-LAND-214	AVOGL#6	DEV	14-Apr-24	-	3,459	3,500
Heritage Petroleum Co Ltd (IPSC)	CAT	CAT-LAND-215	AVOGL#6	DEV	29-Apr-24	-	2,417	2,500
Heritage Petroleum Co Ltd (LO)	COO1	COO1-LAND-375	PCSL #8	DEV	3-Apr-24	28-May-24	6,500	6,427
Heritage Petroleum Co Ltd (LO)	PAS1	PAS1-LAND-617	WSL#4	DEV	20-Apr-24	-	5,080	5,000
BPTT	CYP	CYP-NOP-02	JOEDOUG	DEV	11-Apr-24	4-Oct-24	8,891	8,805
BPTT	CYP	CYP-NOP-04	JOEDOUG	DEV	23-Apr-24	18-Nov-24	5,758	5,216
Heritage Petroleum Co Ltd (LAND)	FYZ	FYZ-LAND-1054	WSL#80	DEV	13-May-24	27-Jun-24	3,000	3,021
Heritage Petroleum Co Ltd (LAND)	PFO	PFO-LAND-33ST1	WSL#80	DEV	29-May-24	-	2,665	5,961
BPTT	CYP	CYP-NOP-03	JOEDOUG	DEV	3-May-24	4-Jun-24	9,580	9,701
EOG	OIL	OIL-OIA-OIL_12	VALARIS 249	EXPL A2.b	7-May-24	29-Jul-24	15,780	16,100
Heritage Petroleum Co Ltd (IPSC)	CAT	CAT-LAND-216	AVOGL#6	DEV	6-May-24	-	2,500	2,500
Heritage Petroleum Co Ltd (IPSC)	CAT	CAT-LAND-217	AVOGL#6	DEV	15-May-24	-	3,307	3,500
Heritage Petroleum Co Ltd (LO)	PAS1	PAS1-LAND-619ST1	WSL#4	DEV	10-May-24	-	5,313	5,555
Heritage Petroleum Co Ltd (FO)	QUI2	QUI2-LAND-162	NCTTL#5	DEV	29-May-24	-	1,420	1,420

TABLE 2D - WELLS STARTED IN 2024

COMPANY/OPERATOR	FIELD/BLOCK	WELL NUMBER	RIG NAME	CLASSIFICATION	DATE SPUDED	DATE COMPLETED	TD (ft)	ATD (ft)
BPTT	CYP	CYP-NOP-03X	JOEDOUG	DEV	8-Jun-24	17-Jul-24	8,475	8,148
Heritage Petroleum Co Ltd (LO)	QUA3	QUA3-LAND-527	SES#10	DEV	13-Jun-24	-	1,600	1,600
Heritage Petroleum Co Ltd (LO)	PAR4	PAR4-LAND-381	WSL#4	DEV	14-Jun-24	15-Aug-24	3,800	3,800
Heritage Petroleum Co Ltd (FO)	QUI2	QUI2-LAND-163	NCTTL#5	DEV	14-Jul-24	31-Aug-24	1,362	1,420
Heritage Petroleum Co Ltd (LO)	FOR3	FOR3-LAND-712X	WSL#4	DEV	10-Jul-24	-	5,540	5,500
Heritage Petroleum Co Ltd (LO)	FOR3	FOR3-LAND-1830	WSL#4	DEV	23-Jul-24	-	5,338	5,300
Heritage Petroleum Co Ltd (FO)	QUI2	QUI2-LAND-164	NCTTL#5	DEV	20-Aug-24	30-Sep-24	1,362	1,420
Heritage Petroleum Co Ltd (LO)	PFE2	PFE2-LAND-234	WSL#4	DEV	11-Aug-24	20-Nov-24	3,357	3,302
Heritage Petroleum Co Ltd (LO)	PFE2	PFE2-LAND-235	WSL#4	DEV	23-Aug-24	10-Dec-24	3,990	3,894
Heritage Petroleum Co Ltd (OFFSHORE)	SOE	SOE-CL37-939	WSL#110	EXPL A2.b	21-Aug-24	15-Nov-24	9,685	9,228
Heritage Petroleum Co Ltd (FO)	QUI2	QUI2-LAND-165	NCTTL#5	DEV	29-Sep-24	15-Nov-24	1,420	1,420
Heritage Petroleum Co Ltd (OFFSHORE)	SOE	SOE-CL37-940	WSL#110	DEV	26-Oct-24	26-Nov-24	10,034	9,310
Heritage Petroleum Co Ltd (LO)	7PAS	7PAS-LAND-1525	PCSL #8	DEV	12-Oct-24		6,277	6,300
Heritage Petroleum Co Ltd (FO)	QUI2	QUI2-LAND-166	NCTTL#5	DEV	16-Nov-24	-	900	1,000
BPTT	EAM1	EAM1-NOP-FRANGIPANI_1	JOE DOUGLS	EXPL A.1	25-Nov-24	-	2,176	12,300
EOG	TSPD	TSPD-NOP-BERYL_1	VALARIS 249	EXPL A2.c	21-Nov-24	-	4,900	12,302
Heritage Petroleum Co Ltd (LO)	COO2	COO2-LAND-376	PCSL #8	DEV	7-Dec-24		4,064	4,800
Heritage Petroleum Co Ltd (OFFSHORE)	SOE	SOE-CL37-941	WSPCL-110	EXPL A2.b	19-Dec-24		2,071	10,413
Heritage Petroleum Co Ltd (FO)	QUA2	QUA2-LAND-528	NCTTL#5	DEV	4-Dec-24		1,079	1,300

**TABLE 2E - WELL COMPLETIONS IN 2024**

Month	WELL COMPLETIONS - OIL						WELL COMPLETIONS - GAS			WELL COMPLETIONS - OTHER				TOTAL COMPLETIONS
	HPCL (LO)	HPCL (FO)	HPCL (IPSC)	HPCL (Offshore)	HPCL (Land)	TOTAL OIL	BPTT	EOG	TOTAL GAS	HPCL (IPSC)	BPTT	HPCL (Offshore)	TOTAL OTHER	
Jan-24	1		0	0	0	1	1	1	2	1	0	0	1	4
Feb-24	1		0	0	0	1	0	1	1	0	0	0	0	2
Mar-24	0		0	0	0	0	0	0	0	0	0	0	0	0
Apr-24	3		0	1	0	4	0	0	0	0	0	0	0	4
May-24	3		0	0	3	6	0	0	0	0	0	0	0	6
Jun-24	1		0	0	1	2	0	0	0	0	1	0	1	3
Jul-24	0	1	0	1	0	2	1	1	2	0	0	0	0	4
Aug-24	2	1	0	2	0	5	1	0	1	0	0	0	0	6
Sep-24	0	1	0	0	0	1	0	0	0	0	0	0	0	1
Oct-24	0	0	0	0	0	0	1	0	1	0	0	0	0	1
Nov-24	1	1	0	1	0	3	1	1	2	0	0	1	1	6
Dec-24	1	1	0	0	0	2	0	0	0	0	1	0	1	3
<b>TOTAL</b>	<b>13</b>	<b>5</b>	<b>0</b>	<b>5</b>	<b>4</b>	<b>27</b>	<b>5</b>	<b>4</b>	<b>9</b>	<b>1</b>	<b>2</b>	<b>1</b>	<b>4</b>	<b>40</b>

\*NOTE: Includes Abandonments.

TABLE 2F - MEEI APPROVED WORKOVERS COMPLETED AND WINCH HOURS IN 2024

Month	HPCL (Offshore)	PEREN	SHELL	HPCL (Land)	NEW HORIZON	WEGL	HPCL (IPSC)	HPCL (FO)	HPCL (LO)	SES	EOG	BPTT	TOTAL WOs COMPLETED	TOTAL WINCH HOURS
Jan-24	0	0	2	0		0	0	0	5	0	0	0	7	947
Feb-24	0	1	1	0		0	0	0	4	1	2	0	9	1,319
Mar-24	1	0	1	1		0	1	1	3	0	0	0	8	1,627
Apr-24	4	1	0	0		0	1	0	8	0	0	0	14	2,623
May-24	1	2	0	0		0	3	0	4	0	0	0	10	1,777
Jun-24	0	0	1	2		0	0	0	6	0	0	0	9	931
Jul-24	2	0	3	0		0	0	0	4	0	0	0	9	1,045
Aug-24	1	0	0	1		0	0	2	5	1	0	0	10	1,311
Sep-24	0	0	0	2		1	1	1	1	0	0	0	6	975
Oct-24	0	0	0	1		0	1	2	3	0	1	1	9	2,039
Nov-24	0	0	0	1		0	1	1	5	0	1	0	9	1,999
Dec-24	0	0	0	0	3	0	0	0	5	0	0	0	8	1,153
<b>TOTAL</b>	<b>9</b>	<b>4</b>	<b>8</b>	<b>8</b>	<b>3</b>	<b>1</b>	<b>8</b>	<b>7</b>	<b>53</b>	<b>2</b>	<b>4</b>	<b>1</b>	<b>108</b>	<b>17,746</b>

NOTE: Figures in **RED/Italics** are preliminary.

**TABLE 3A - NATURAL GAS PRODUCTION BY COMPANY IN 2024 (MMSCF/D)**

COMPANY	Jan-24	Feb-24	Mar-24	Apr-24	May-24	Jun-24	Jul-24	Aug-24	Sep-24	Oct-24	Nov-24	Dec-24	AVG 2024
BPTT	1,178	1,281	1,240	1,092	1,187	937	1,124	1,301	1,197	1,252	1194	1,099	1,174
HPCL (Offshore)	14	14	14	14	14	14	14	14	14	14	14	14	14
HPCL (Land)	2	2	2	2	2	2	2	2	2	2	2	2	2
EOG	324	333	319	329	323	333	324	357	401	407	406	412	356
SHELL	662	663	642	595	604	559	520	572	474	575	585	583	586
WOODSIDE	269	346	331	348	312	21	271	342	311	335	335	331	296
PERENCO	22	24	26	25	27	37	42	47	45	46	49	122	43
DENOVO	28	28	28	28	28	28	28	28	29	28	29	28	28
TOUCHSTONE	45	43	39	35	32	28	35	29	25	21	35	31	33
<b>TOTAL</b>	<b>2,545</b>	<b>2,734</b>	<b>2,641</b>	<b>2,467</b>	<b>2,528</b>	<b>1,960</b>	<b>2,360</b>	<b>2,692</b>	<b>2,497</b>	<b>2,680</b>	<b>2,649</b>	<b>2,622</b>	<b>2,531</b>

**TABLE 3B - NATURAL GAS UTILIZATION BY SECTOR IN 2024 (MMSCF/D)**

SECTOR	Jan-24	Feb-24	Mar-24	Apr-24	May-24	Jun-24	Jul-24	Aug-24	Sep-24	Oct-24	Nov-24	Dec-24	AVG 2024
Power Generation	256	254	265	266	290	265	284	274	275	272	275	247	268
Ammonia Manufacture	414	480	450	448	443	294	445	478	480	449	452	438	439
Methanol Manufacture	496	558	536	557	506	409	530	572	544	484	487	512	516
Refinery	0	0	0	0	0	0	0	0	0	0	0	0	0
Iron & Steel Manufacture	42	46	47	42	43	42	48	45	16	49	43	43	42
Cement Manufacture	13	11	9	9	12	12	13	12	12	13	13	8	11
Ammonia Derivatives	22	23	23	20	20	12	13	18	17	17	21	22	19
Gas Processing	18	19	19	18	18	15	19	19	18	13	17	12	17
Gas to Liquids	0	0	0	0	0	0	0	0	0	38	52	52	12
Small Consumers	10	11	10	10	10	8	10	11	10	8	8	8	9
LNG	1158	1284	1182	994	1087	848	800	1155	1,015	1223	1168	1132	1,087
<b>TOTAL</b>	<b>2,431</b>	<b>2,686</b>	<b>2,540</b>	<b>2,364</b>	<b>2,430</b>	<b>1,905</b>	<b>2,161</b>	<b>2,586</b>	<b>2,388</b>	<b>2,566</b>	<b>2,536</b>	<b>2,474</b>	<b>2,422</b>

NOTE: Figures in **RED/Italics** are preliminary.

NOTE (For Table 3A): 100 % of Joint Venture field production is reported by the Operator

NOTE (for Table 3B) : Ammonia Derivatives are Urea, UAN and Melamine

**TABLE 4A - CRUDE OIL IMPORTS IN 2024 (BBLs)**

CRUDE TYPE	COUNTRY	Jan-24	Feb-24	Mar-24	Apr-24	May-24	Jun-24	Jul-24	Aug-24	Sep-24	Oct-24	Nov-24	Dec-24	TOTAL
-	-	-	-	-	-	-	-	-	-	-	-	-	-	-
-	-	-	-	-	-	-	-	-	-	-	-	-	-	-
-	-	-	-	-	-	-	-	-	-	-	-	-	-	-
-	-	-	-	-	-	-	-	-	-	-	-	-	-	-
-	-	-	-	-	-	-	-	-	-	-	-	-	-	-
-	-	-	-	-	-	-	-	-	-	-	-	-	-	-
-	-	-	-	-	-	-	-	-	-	-	-	-	-	-
-	-	-	-	-	-	-	-	-	-	-	-	-	-	-
-	-	-	-	-	-	-	-	-	-	-	-	-	-	-
-	-	-	-	-	-	-	-	-	-	-	-	-	-	-
-	-	-	-	-	-	-	-	-	-	-	-	-	-	-
-	-	-	-	-	-	-	-	-	-	-	-	-	-	-
-	-	-	-	-	-	-	-	-	-	-	-	-	-	-
-	-	-	-	-	-	-	-	-	-	-	-	-	-	-
-	-	-	-	-	-	-	-	-	-	-	-	-	-	-
-	-	-	-	-	-	-	-	-	-	-	-	-	-	-
-	-	-	-	-	-	-	-	-	-	-	-	-	-	-
-	-	-	-	-	-	-	-	-	-	-	-	-	-	-
<b>TOTAL</b>		-	-	-	-	-	-	-	-	-	-	-	-	-

**TABLE 4B - CRUDE OIL EXPORTS IN 2024 (BBLs)**

CRUDE TYPE		Jan-24	Feb-24	Mar-24	Apr-24	May-24	Jun-24	Jul-24	Aug-24	Sep-24	Oct-24	Nov-24	Dec-24	TOTAL
<b>BPTT</b>	<b>Galeota Mix</b>	-	760,535	-	380,495	380,415	380,088	380,624	-	382,377	369,588	379,110	379,714	<b>3,792,946</b>
<b>WOODSIDE</b>	<b>Calypso Crude</b>	-	-	-	-	-	-	378,757	-	-	378,370	-	-	<b>757,127</b>
<b>HPCL</b>	<b>Molo Crude</b>	1,627,063	1,052,887	1,050,534	1,026,494	1,595,630	1,071,754	1,029,628	1,023,387	1,508,908	1,050,705	1,090,433	1,057,308	<b>14,184,731</b>
<b>TOTAL</b>		<b>1,627,063</b>	<b>1,813,422</b>	<b>1,050,534</b>	<b>1,406,989</b>	<b>1,976,045</b>	<b>1,451,842</b>	<b>1,789,009</b>	<b>1,023,387</b>	<b>1,891,285</b>	<b>1,798,663</b>	<b>1,469,543</b>	<b>1,437,022</b>	<b>18,734,804</b>



**TABLE 4C - CRUDE OIL REFINERY SALES IN 2024 (BBLs)**

LOCAL SALES (BBLs)													
PRODUCT	Jan-24	Feb-24	Mar-24	Apr-24	May-24	Jun-24	Jul-24	Aug-24	Sep-24	Oct-24	Nov-24	Dec-24	TOTAL
Liquefied Petroleum Gas	-	-	-	-	-	-	-	-	-	-	-	-	-
Motor Gasoline	-	-	-	-	-	-	-	-	-	-	-	-	-
Naphtha	-	-	-	-	-	-	-	-	-	-	-	-	-
Aviation Gasoline	-	-	-	-	-	-	-	-	-	-	-	-	-
Kerosine/Jet	-	-	-	-	-	-	-	-	-	-	-	-	-
Gas Oils /Diesel	-	-	-	-	-	-	-	-	-	-	-	-	-
Fuel Oils	-	-	-	-	-	-	-	-	-	-	-	-	-
Bitumen	-	-	-	-	-	-	-	-	-	-	-	-	-
Sulphur	-	-	-	-	-	-	-	-	-	-	-	-	-
Other Refined/Unfinished Prod.	-	-	-	-	-	-	-	-	-	-	-	-	-
<b>TOTAL</b>	-	-	-	-	-	-	-	-	-	-	-	-	-

EXPORT SALES (BBLs)													
PRODUCT	Jan-24	Feb-24	Mar-24	Apr-24	May-24	Jun-24	Jul-24	Aug-24	Sep-24	Oct-24	Nov-24	Dec-24	TOTAL
Liquefied Petroleum Gas	-	-	-	-	-	-	-	-	-	-	-	-	-
Motor Gasoline	-	-	-	-	-	-	-	-	-	-	-	-	-
Naphtha	-	-	-	-	-	-	-	-	-	-	-	-	-
Aviation Gasoline	-	-	-	-	-	-	-	-	-	-	-	-	-
Kerosine/Jet	-	-	-	-	-	-	-	-	-	-	-	-	-
Gas Oils /Diesel	-	-	-	-	-	-	-	-	-	-	-	-	-
Fuel Oils	-	-	-	-	-	-	-	-	-	-	-	-	-
Bitumen	-	-	-	-	-	-	-	-	-	-	-	-	-
Sulphur	-	-	-	-	-	-	-	-	-	-	-	-	-
Other Refined/Unfinished Prod.	-	-	-	-	-	-	-	-	-	-	-	-	-
<b>TOTAL</b>	-	-	-	-	-	-	-	-	-	-	-	-	-

**TABLE 4D - CRUDE OIL REFINERY OUTPUT IN 2024 (BBLs)**

PRODUCT	Jan-24	Feb-24	Mar-24	Apr-24	May-24	Jun-24	Jul-24	Aug-24	Sep-24	Oct-24	Nov-24	Dec-24	TOTAL
Liquefied Petroleum Gas	-	-	-	-	-	-	-	-	-	-	-	-	-
Motor Gasoline	-	-	-	-	-	-	-	-	-	-	-	-	-
Aviation Gasoline	-	-	-	-	-	-	-	-	-	-	-	-	-
Kerosine/Jet	-	-	-	-	-	-	-	-	-	-	-	-	-
Gas Oils / Diesel	-	-	-	-	-	-	-	-	-	-	-	-	-
Fuel Oils	-	-	-	-	-	-	-	-	-	-	-	-	-
Bitumen	-	-	-	-	-	-	-	-	-	-	-	-	-
Sulphur	-	-	-	-	-	-	-	-	-	-	-	-	-
Other Refined/Unfinished Prod.	-	-	-	-	-	-	-	-	-	-	-	-	-
Refinery Loss/(Gain)	-	-	-	-	-	-	-	-	-	-	-	-	-
Refinery Gas	-	-	-	-	-	-	-	-	-	-	-	-	-
<b>TOTAL</b>	-	-	-	-	-	-	-	-	-	-	-	-	-

**TABLE 4E - CRUDE OIL REFINERY THROUGHPUT IN 2024 (BBLs & BOPD)**

	Jan-24	Feb-24	Mar-24	Apr-24	May-24	Jun-24	Jul-24	Aug-24	Sep-24	Oct-24	Nov-24	Dec-24	AVG 2024
Throughput (BBLs)	-	-	-	-	-	-	-	-	-	-	-	-	-
Throughput (BOPD)	-	-	-	-	-	-	-	-	-	-	-	-	-

TABLE 4F - PARIA FUEL TRADING REFINED PRODUCT IMPORTS IN 2024 (LITRES)													
PRODUCT	Jan-24	Feb-24	Mar-24	Apr-24	May-24	Jun-24	Jul-24	Aug-24	Sep-24	Oct-24	Nov-24	Dec-24	TOTAL
Unleaded Gasoline 95	73,810,351	23,797,174	82,838,745	31,833,808	64,829,334	78,295,851	35,742,185	47,000,214	45,827,367	76,708,207	26,840,821	78,302,846	665,826,904
Unleaded Gasoline 92	55,682,494	50,783,946	47,828,377	47,706,434	-	47,540,452	31,645,090	48,838,263	-	47,007,527	66,442,098	47,521,373	490,996,054
Jet Fuel/Kerosene	41,442,028	36,581,796	63,565,228	-	50,647,694	31,679,909	-	29,434,853	636,743	66,563,723	7,903,244	26,234,604	354,689,822
Gas Oil/Diesel	133,392,160	60,417,286	108,208,778	89,319,692	91,564,429	91,084,288	176,816,279	44,948,805	106,571,053	117,026,833	-	113,208,124	1,132,557,726
Fuel Oil	14,135,057	-	15,880,893	8,060,959	8,010,560	27,416,513	6,368,383	6,389,052	13,266,511	11,488,242	98,972,587	14,332,996	224,321,754
<b>TOTAL</b>	<b>318,462,090</b>	<b>171,580,201</b>	<b>318,322,023</b>	<b>176,920,893</b>	<b>215,052,017</b>	<b>276,017,013</b>	<b>250,571,938</b>	<b>176,611,186</b>	<b>166,301,674</b>	<b>318,794,532</b>	<b>200,158,750</b>	<b>279,599,944</b>	<b>2,868,392,260</b>

TABLE 4G - PARIA FUEL TRADING REFINED PRODUCT LOCAL SALES IN 2024 (LITRES)													
PRODUCT	Jan-24	Feb-24	Mar-24	Apr-24	May-24	Jun-24	Jul-24	Aug-24	Sep-24	Oct-24	Nov-24	Dec-24	TOTAL
Unleaded Gasoline 95	11,492,375	12,248,835	13,070,480	11,584,429	13,846,814	11,659,630	12,935,341	12,613,075	12,718,324	13,792,599	12,619,752	14,511,061	153,092,716
Unleaded Gasoline 92	36,976,878	38,820,174	39,321,937	36,401,664	40,664,900	37,705,993	39,116,844	36,334,730	36,122,959	39,012,548	37,775,152	38,911,432	457,165,211
Jet Fuel/Kerosene	9,992,969	9,389,136	9,631,273	9,021,081	9,841,295	10,219,366	10,185,979	10,125,882	9,561,160	9,296,129	9,529,363	10,806,187	117,599,822
Gas Oil/Diesel	37,310,274	38,242,256	42,003,094	37,055,736	42,719,648	37,768,634	38,976,617	37,401,533	38,452,755	40,542,162	35,693,535	40,558,220	466,724,463
Fuel Oil	-	-	-	-	-	-	-	-	-	-	-	-	-
<b>TOTAL</b>	<b>95,772,497</b>	<b>98,700,402</b>	<b>104,026,784</b>	<b>94,062,910</b>	<b>107,072,657</b>	<b>97,353,623</b>	<b>101,214,781</b>	<b>96,475,219</b>	<b>96,855,198</b>	<b>102,643,438</b>	<b>95,617,803</b>	<b>104,786,901</b>	<b>1,194,582,212</b>

TABLE 4H - PARIA FUEL TRADING REFINED PRODUCT EXPORTS IN 2024 (LITRES)													
PRODUCT	Jan-24	Feb-24	Mar-24	Apr-24	May-24	Jun-24	Jul-24	Aug-24	Sep-24	Oct-24	Nov-24	Dec-24	TOTAL
Unleaded Gasoline 95	33,306,028	41,762,546	39,613,042	47,387,824	46,009,566	40,613,388	44,185,190	47,583,378	42,797,075	38,839,252	40,355,511	47,068,260	509,521,061
Unleaded Gasoline 92	-	-	-	-	-	-	-	-	-	-	-	-	-
Jet Fuel/Kerosene	31,763,536	24,111,809	20,580,867	29,217,200	16,431,783	19,650,793	17,157,718	28,465,350	19,931,405	20,788,981	21,046,858	21,797,436	270,943,738
Gas Oil/Diesel	38,076,115	36,332,345	43,834,306	49,240,023	56,074,238	41,938,068	45,177,269	60,360,209	52,489,876	49,141,451	52,005,920	64,397,843	589,067,662
Fuel Oil	-	-	-	-	-	-	-	-	-	-	-	-	-
<b>TOTAL</b>	<b>103,145,678</b>	<b>102,206,701</b>	<b>104,028,215</b>	<b>125,845,047</b>	<b>118,515,587</b>	<b>102,202,249</b>	<b>106,520,177</b>	<b>136,408,938</b>	<b>115,218,356</b>	<b>108,769,684</b>	<b>113,408,289</b>	<b>133,263,539</b>	<b>1,369,532,461</b>

**TABLE 5A - PRODUCTION, IMPORT AND EXPORT OF NGLS FROM PPGPL IN 2024 (BBLs)**

PRODUCTION (BBLs)													
PRODUCT	Jan-24	Feb-24	Mar-24	Apr-24	May-24	Jun-24	Jul-24	Aug-24	Sep-24	Oct-24	Nov-24	Dec-24	TOTAL
<b>Propane</b>	160,515	162,732	169,168	151,846	149,195	120,294	150,405	162,545	133,824	165,699	149,772	161,357	<b>1,837,352</b>
<b>Butane</b>	126,687	128,168	142,115	122,092	127,694	96,402	123,234	142,590	124,489	146,901	138,561	145,250	<b>1,564,183</b>
<b>Natural Gasoline</b>	196,616	202,576	216,417	181,707	206,441	156,764	203,178	238,785	192,878	225,353	217,088	221,742	<b>2,459,545</b>
<b>TOTAL</b>	<b>483,818</b>	<b>493,476</b>	<b>527,700</b>	<b>455,645</b>	<b>483,330</b>	<b>373,460</b>	<b>476,817</b>	<b>543,920</b>	<b>451,191</b>	<b>537,953</b>	<b>505,421</b>	<b>528,349</b>	<b>5,861,080</b>

EXPORT (BBLs)													
PRODUCT	Jan-24	Feb-24	Mar-24	Apr-24	May-24	Jun-24	Jul-24	Aug-24	Sep-24	Oct-24	Nov-24	Dec-24	TOTAL
<b>Propane</b>	85,579	62,839	211,272	96,849	160,920	97,767	99,194	80,829	176,428	73,273	76,200	130,622	<b>1,351,772</b>
<b>Butane</b>	75,844	39,297	137,185	38,715	58,394	26,390	90,173	110,040	196,532	37,649	51,026	80,083	<b>941,328</b>
<b>Natural Gasoline</b>	330,864	0	325,757	344,181	274,901	0	323,159	211,665	0	319,945	325,765	0	<b>2,456,237</b>
<b>TOTAL</b>	<b>492,287</b>	<b>102,136</b>	<b>674,214</b>	<b>479,745</b>	<b>494,215</b>	<b>124,157</b>	<b>512,526</b>	<b>402,534</b>	<b>372,960</b>	<b>430,867</b>	<b>452,991</b>	<b>210,705</b>	<b>4,749,337</b>

NOTE: Local NGL sales from ALNG are mainly to PPGPL. These sold NGL volumes have been included in PPGPL's production data.

**TABLE 5B - PRODUCTION AND EXPORT OF AMMONIA IN 2024 (MT)**

PRODUCTION (MT)													
PLANT	Jan-24	Feb-24	Mar-24	Apr-24	May-24	Jun-24	Jul-24	Aug-24	Sep-24	Oct-24	Nov-24	Dec-24	TOTAL
TRINGEN I	12,274	34,601	13,704	25,494	31,197	3,037	35,749	38,579	34,710	38,322	38,702	22,035	<b>328,404</b>
TRINGEN II	43,773	41,908	40,445	28,846	43,531	33,957	23,199	40,565	34,832	40,718	38,310	42,196	<b>452,280</b>
NUTRIEN (1,2,3,4)	93,691	112,990	120,454	106,598	114,974	79,884	107,265	118,025	120,714	101,032	99,647	98,371	<b>1,273,645</b>
PLNL	35,307	43,859	47,279	43,984	47,760	0	37,702	48,168	33,057	33,075	41,636	50,326	<b>462,153</b>
CNC	47,779	42,634	47,255	26,750	6,361	45,194	47,450	39,378	49,191	39,001	48,420	53,769	<b>493,182</b>
N2000	48,973	40,530	50,732	47,529	47,851	1,400	36,844	52,729	50,359	48,537	31,273	0	<b>456,757</b>
AUM-NH3	21,784	51,095	55,973	56,388	52,741	53,062	50,401	56,878	54,327	46,273	47,861	58,079	<b>604,862</b>
<b>TOTAL</b>	<b>303,581</b>	<b>367,617</b>	<b>375,842</b>	<b>335,589</b>	<b>344,415</b>	<b>216,534</b>	<b>338,610</b>	<b>394,322</b>	<b>377,190</b>	<b>346,958</b>	<b>345,849</b>	<b>324,776</b>	<b>4,071,283</b>

EXPORT (MT)													
PLANT	Jan-24	Feb-24	Mar-24	Apr-24	May-24	Jun-24	Jul-24	Aug-24	Sep-24	Oct-24	Nov-24	Dec-24	TOTAL
TRINGEN I	18,801	20,001	14,638	41,960	23,841	8,652	34,562	32,554	14,761	50,536	28,426	11,502	<b>300,234</b>
TRINGEN II	81,139	14,561	58,448	30,154	45,555	36,333	24,678	30,955	32,006	45,261	35,753	35,706	<b>470,549</b>
NUTRIEN (1,2,3,4)	57,105	94,717	97,869	66,354	102,496	61,253	93,294	105,956	87,430	94,506	73,886	65,298	<b>1,000,165</b>
PLNL	56,884	61,768	25,280	36,502	80,509	0	20,824	63,188	21,511	47,378	21,750	36,503	<b>472,097</b>
CNC	65,468	69,005	56,487	23,002	8,502	41,505	54,602	39,007	21,500	47,584	36,504	39,007	<b>502,173</b>
N2000	6,305	55,802	55,901	25,001	84,006	0	33,002	54,272	50,506	45,008	26,003	9,500	<b>445,306</b>
AUM-NH3	0	0	0	6,000	17,500	0	6,000	0	0	10,000	0	2,500	<b>42,000</b>
<b>TOTAL</b>	<b>285,702</b>	<b>315,854</b>	<b>308,624</b>	<b>228,973</b>	<b>362,409</b>	<b>147,743</b>	<b>266,962</b>	<b>325,932</b>	<b>227,714</b>	<b>340,273</b>	<b>222,322</b>	<b>200,016</b>	<b>3,232,525</b>

NOTE 1: Figures in **RED/Italics** are preliminary.

NOTE 2: The production figures seen for AUM-NH3 are the gross values; NOT the net values as previously presented.

NOTE 3: YARA has been removed from both the Production and Export tables as the plant permanently closed at the end of December 2019.

**TABLE 5C - PRODUCTION AND EXPORT OF DOWNSTREAM AMMONIA AND METHANOL PRODUCTS IN 2024 (MT)**

PRODUCTION (MT)													
PRODUCT	Jan-24	Feb-24	Mar-24	Apr-24	May-24	Jun-24	Jul-24	Aug-24	Sep-24	Oct-24	Nov-24	Dec-24	TOTAL
Urea	46,733	54,116	46,463	46,411	56,714	0	0	29,460	53,787	34,218	52,598	49,502	<b>470,003</b>
UAN	127,211	115,005	119,453	82,568	125,518	119,678	114,509	115,504	103,238	106,210	99,651	118,848	<b>1,347,393</b>
Melamine	670	2,526	2,338	1,513	2,535	2,739	2,821	2,392	1,798	2,828	2,675	2,808	<b>27,643</b>
CGCL DME	0	0	0	0	0	0	0	0	0	0	0	0	<b>0</b>
<b>TOTAL</b>	<b>174,614</b>	<b>171,647</b>	<b>168,254</b>	<b>130,492</b>	<b>184,767</b>	<b>122,417</b>	<b>117,330</b>	<b>147,356</b>	<b>158,823</b>	<b>143,256</b>	<b>154,924</b>	<b>171,158</b>	<b>1,845,039</b>

EXPORT (MT)													
PRODUCT	Jan-24	Feb-24	Mar-24	Apr-24	May-24	Jun-24	Jul-24	Aug-24	Sep-24	Oct-24	Nov-24	Dec-24	TOTAL
Urea	44,781	28,009	70,103	47,406	10,339	26,194	10,930	25,564	20,814	48,565	41,468	95,079	<b>469,253</b>
UAN	128,528	95,407	164,585	79,441	118,889	111,282	92,139	166,085	97,891	85,078	115,353	73,512	<b>1,328,190</b>
Melamine	0	1,767	2,920	2,100	1,360	2,863	2,265	2,780	2,320	2,622	2,785	2,840	<b>26,622</b>
CGCL DME	0	0	0	0	0	0	0	0	0	0	0	0	<b>0</b>
<b>TOTAL</b>	<b>173,309</b>	<b>125,183</b>	<b>237,608</b>	<b>128,947</b>	<b>130,588</b>	<b>140,339</b>	<b>105,334</b>	<b>194,429</b>	<b>121,025</b>	<b>136,265</b>	<b>159,606</b>	<b>171,431</b>	<b>1,824,065</b>

NOTE: Figures in **RED/Italics** are preliminary.

**TABLE 5D - PRODUCTION AND EXPORT OF METHANOL IN 2024 (MT)**

PRODUCTION (MT)													
PLANT	Jan-24	Feb-24	Mar-24	Apr-24	May-24	Jun-24	Jul-24	Aug-24	Sep-24	Oct-24	Nov-24	Dec-24	TOTAL
CMC	46,244	40,237	33,237	44,412	46,035	35,012	44,261	45,668	44,952	29,394	39,553	48,167	497,172
TTMC II	28,097	36,247	43,603	29,978	42,593	11,020	42,580	36,951	41,663	41,734	40,654	49,264	444,384
MIV	35,376	33,101	38,856	37,374	33,798	2,573	6,816	35,005	31,695	38,548	31,407	40,748	365,297
TITAN	0	0	0	0	0	0	0	0	26,660	68,654	66,764	69,761	231,839
ATLAS	150,121	133,100	125,019	125,946	95,560	144,426	149,919	146,417	77,186	0	0	0	1,147,694
M5000	74,445	140,578	152,349	151,605	135,026	142,916	154,511	154,616	150,867	157,165	151,563	159,003	1,724,644
CGCL	91,450	84,651	83,096	89,635	81,623	18,005	78,203	88,334	90,634	93,402	89,844	89,222	978,099
<b>TOTAL</b>	<b>425,733</b>	<b>467,914</b>	<b>476,160</b>	<b>478,950</b>	<b>434,635</b>	<b>353,952</b>	<b>476,290</b>	<b>506,991</b>	<b>463,657</b>	<b>428,897</b>	<b>419,785</b>	<b>456,165</b>	<b>5,389,129</b>

EXPORT (MT)													
PLANT	Jan-24	Feb-24	Mar-24	Apr-24	May-24	Jun-24	Jul-24	Aug-24	Sep-24	Oct-24	Nov-24	Dec-24	TOTAL
CMC	44,500	31,100	48,650	41,561	50,898	34,700	36,500	32,700	57,373	35,000	30,400	57,700	501,082
TTMC II	10,618	44,203	41,600	39,137	56,822	8,426	11,001	53,492	33,310	45,883	46,050	65,607	456,149
MIV	47,022	30,304	46,998	38,900	31,470	6,500	13,500	29,271	24,600	45,702	19,700	44,231	378,198
TITAN	0	0	0	0	0	0	0	0	1,078	45,895	61,256	79,916	188,145
ATLAS	106,331	158,104	153,531	95,475	119,060	143,291	152,333	141,882	117,343	0	0	0	1,187,350
M5000	132,731	133,194	184,727	134,973	136,577	155,292	163,695	161,480	149,429	144,457	170,141	162,979	1,829,675
CGCL	87,126	86,721	73,833	107,927	92,181	16,997	77,314	85,549	92,797	88,157	85,766	118,925	1,013,293
<b>TOTAL</b>	<b>428,328</b>	<b>483,626</b>	<b>549,339</b>	<b>457,973</b>	<b>487,008</b>	<b>365,206</b>	<b>454,343</b>	<b>504,374</b>	<b>475,930</b>	<b>405,094</b>	<b>413,313</b>	<b>529,358</b>	<b>5,553,892</b>

NOTE: TTMC I has been removed from the table as the plant has been idled since 2016.

NOTE: Combined Exports for TTMC I & TTMC II are reported under TTMC II.

NOTE: Figures in **RED/Italics** are preliminary.

**TABLE 5E (I) - PRODUCTION OF LNG FROM ALNG IN 2024 (M<sup>3</sup>)**

TRAIN	Jan-24	Feb-24	Mar-24	Apr-24	May-24	Jun-24	Jul-24	Aug-24	Sep-24	Oct-24	Nov-24	Dec-24	TOTAL
Train 1	0	0	0	0	0	0	0	0	0	0	0	0	0
Train 2	553,123	515,231	565,293	423,858	628,506	612,785	603,624	615,788	487,515	997,502	1,016,992	1,023,177	8,043,394
Train 3	95,496	130,980	252,583	108,962	100,548	366,196	447,785	110,879	51,935				1,665,364
Train 4	811,790	824,438	692,129	687,122	665,116	29,587	84,647	776,885	719,534	618,941	536,865	582,833	7,029,886
<b>TOTAL</b>	<b>1,460,409</b>	<b>1,470,649</b>	<b>1,510,005</b>	<b>1,219,942</b>	<b>1,394,170</b>	<b>1,008,568</b>	<b>1,136,056</b>	<b>1,503,552</b>	<b>1,258,984</b>	<b>1,616,443</b>	<b>1,553,857</b>	<b>1,606,009</b>	<b>16,738,644</b>

**TABLE 5E (II) - PRODUCTION OF LNG FROM ALNG IN 2024 (MMBTU)**

TRAIN	Jan-24	Feb-24	Mar-24	Apr-24	May-24	Jun-24	Jul-24	Aug-24	Sep-24	Oct-24	Nov-24	Dec-24	TOTAL
Train 1	0	0	0	0	0	0	0	0	0	0	0	0	0
Train 2	12,349,964	11,514,795	12,620,732	9,455,636	14,040,070	13,693,968	13,492,626	13,754,056	11,253,553	22,281,213	22,726,719	22,844,462	180,027,793
Train 3	2,132,836	2,925,347	5,629,039	2,430,790	2,238,872	8,170,455	9,990,889	2,475,230	863,695				36,857,153
Train 4	18,151,868	18,444,409	15,485,556	15,355,528	14,877,647	661,639	1,890,591	17,365,167	16,002,436	13,864,272	12,027,921	13,067,112	157,194,146
<b>TOTAL</b>	<b>32,634,669</b>	<b>32,884,551</b>	<b>33,735,327</b>	<b>27,241,953</b>	<b>31,156,589</b>	<b>22,526,062</b>	<b>25,374,106</b>	<b>33,594,452</b>	<b>28,119,683</b>	<b>36,145,485</b>	<b>34,754,640</b>	<b>35,911,574</b>	<b>374,079,092</b>

NOTE 1: M3 converted to MMBTU ; conversion factors vary by train & by month.

NOTE 2: For October - December 2024, the Production volume of LNG produced from Trains 2 and 3 is combined.



**TABLE 5F (I) - LNG SALES & DELIVERIES FROM ALNG IN 2024 (MMBTU)**

TRAIN	Jan-24	Feb-24	Mar-24	Apr-24	May-24	Jun-24	Jul-24	Aug-24	Sep-24	Oct-24	Nov-24	Dec-24	TOTAL
Train 1	0	0	0	0	0	0	0	0	0	0	0	0	0
Train 2	10,058,706	10,324,482	14,344,103	6,932,333	17,624,297	11,232,508	16,811,748	11,385,850	10,359,812	<i>18,750,708</i>	<i>24,193,617</i>	<i>22,848,353</i>	<i>174,866,517</i>
Train 3	2,224,215	1,951,935	3,913,958	8,490,916	375,185	0	8,635,668	9,771,444	2,818,109				
Train 4	19,931,372	21,979,536	17,495,435	13,624,540	9,620,193	11,968,865	2,295,370	11,677,534	17,369,290	<i>11,822,390</i>	<i>9,674,003</i>	<i>13,377,173</i>	<i>160,835,701</i>
<b>TOTAL</b>	<b>32,214,293</b>	<b>34,255,953</b>	<b>35,753,496</b>	<b>29,047,789</b>	<b>27,619,675</b>	<b>23,201,373</b>	<b>27,742,786</b>	<b>32,834,828</b>	<b>30,547,211</b>	<b><i>30,573,098</i></b>	<b><i>33,867,620</i></b>	<b><i>36,225,526</i></b>	<b><i>373,883,648</i></b>

**TABLE 5F (II) - LNG SALES & DELIVERIES FROM ALNG IN 2024 (M<sup>3</sup>)**

TRAIN	Jan-24	Feb-24	Mar-24	Apr-24	May-24	Jun-24	Jul-24	Aug-24	Sep-24	Oct-24	Nov-24	Dec-24	TOTAL
Train 1	0	0	0	0	0	0	0	0	0	0	0	0	0
Train 2	450,503	461,970	642,484	310,721	788,955	502,638	752,113	551,857	448,797	<i>839,446</i>	<i>1,082,634</i>	<i>1,023,351</i>	<i>7,855,470</i>
Train 3	99,587	87,396	175,625	380,714	16,850	0	387,045	395,596	169,456				
Train 4	891,373	982,539	781,961	609,665	430,078	535,220	102,770	522,431	780,993	<i>527,785</i>	<i>431,798</i>	<i>596,662</i>	<i>7,193,276</i>
<b>TOTAL</b>	<b>1,441,464</b>	<b>1,531,906</b>	<b>1,600,070</b>	<b>1,301,100</b>	<b>1,235,882</b>	<b>1,037,859</b>	<b>1,241,928</b>	<b>1,469,885</b>	<b>1,399,247</b>	<b><i>1,367,231</i></b>	<b><i>1,514,432</i></b>	<b><i>1,620,013</i></b>	<b><i>16,761,016</i></b>

**TABLE 5G - NGL SALES & DELIVERIES FROM ALNG IN 2024 (BBLs)**

TRAIN	Jan-24	Feb-24	Mar-24	Apr-24	May-24	Jun-24	Jul-24	Aug-24	Sep-24	Oct-24	Nov-24	Dec-24	TOTAL
Train 1	0	0	0	0	0	0	0	0	0	0	0	0	0
Train 2	42,905	40,905	46,426	36,018	54,903	59,924	55,181	51,195	36,524	<i>120,243</i>	<i>124,978</i>	<i>133,061</i>	<i>802,263</i>
Train 3	13,945	19,974	40,330	8,907	15,322	57,690	65,882	16,577	3,068				
Train 4	121,160	125,324	109,727	98,886	100,383	4,673	11,919	124,733	108,759	<i>93,798</i>	<i>83,891</i>	<i>90,391</i>	<i>1,073,644</i>
<b>TOTAL</b>	<b>178,010</b>	<b>186,203</b>	<b>196,483</b>	<b>143,811</b>	<b>170,608</b>	<b>122,287</b>	<b>132,982</b>	<b>192,505</b>	<b>148,351</b>	<b><i>214,041</i></b>	<b><i>208,869</i></b>	<b><i>223,452</i></b>	<b><i>2,117,602</i></b>

NOTE 1: For LNG, MMBTU converted to M3 ; conversion factors vary by train & by month. Figures in **RED/Italics** are preliminary.

NOTE 2: For NGL's, MMBTU converted to BBLs; conversion factors vary by train & by month. Figures in **RED/Italics** are preliminary.

NOTE 3: Local NGL sales from ALNG are to mainly PPGPL. Sold NGL volumes have been included in PPGPL's production data.

NOTE 4: For **October - December 2024**, the volumes for LNG and NGL Sales & Deliveries from Trains 2 and 3 are combined.